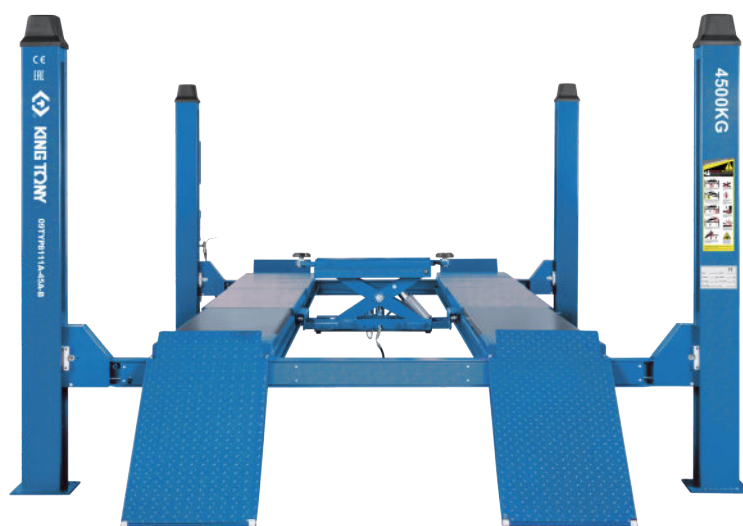
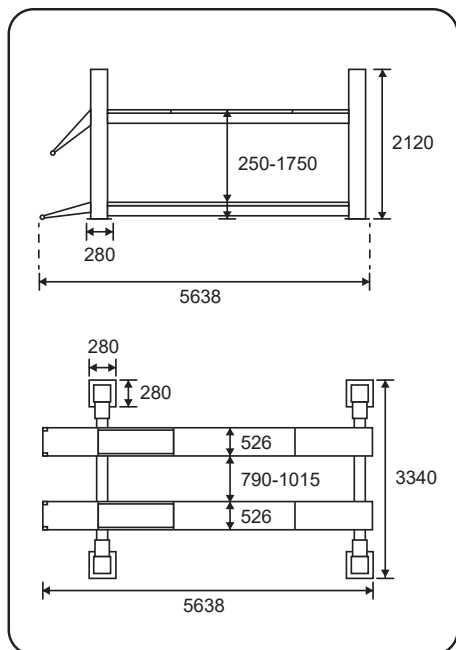


Four-Post Lift For Four-Wheel Alignment

9TYP811

- Low profile platform, with short drive-on raps, can be 220/245 mm when fully lowered, requires less space
- One piece platform, no welding, ensures durability and plainness
- With second lifting guide rail and equipped the secondary lifting jack
- Safety rack installed in each column
- Mechanical lock engaged automatically in lifting process
- Adjustable width between two platforms makes the lift more flexible for different vehicles



KT NO.	Input voltage	Capacity (T)	N.W (kg)	G.W (kg)	CUFT
9TYP8111A-45A-B	380V 50/60Hz	4.5	1360.8	1361	86.87

