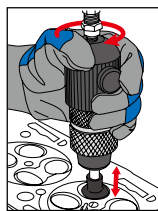


Heavy Duty Air Valve Lapper Set

9AH0321

- Design for operating in tough environments
- Adjustable speed regulator for precise control during operation
- Complete with rubber caps of 20, 30, 35, 45mm



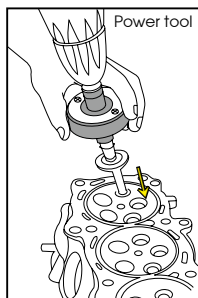
5
PC.

KT NO.	Free Speed R.P.M	Pistone Stroke inch mm	Overall Length inch mm	Air Inlet inch	Air Hose ID	Average Air Consumption CFM L/min	kg	
9AH0321	5600	1.1 29	9.0 228	1/4	3/8	2.5 71	1.82	1 / 10

Oscillating Valve Lapping Tool

9AH0331

- Facilitates the easy insertion of valves
- Automatic change in direction
- Use with fine grinding paste
- Working speed(Max):1000rpm

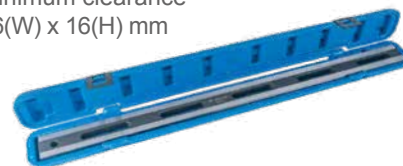


Cylinder Head Surface Rectifier

9AH41

- Precise test for engine block and cylinder head when reassembling or overhauling an engine
- Work with a feeler gauge
- Suitable for 4 and 6 cylinder engine
- Refer to automotive manufacturer's service manual for the minimum clearance
- Size : 600(L) x 36(W) x 16(H) mm

kg 4.08
1 / 5



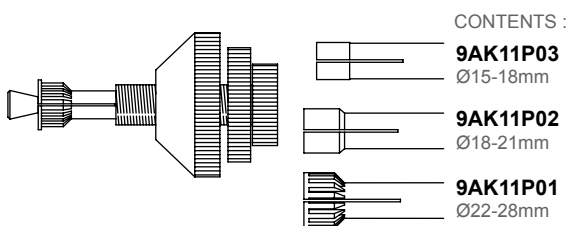
Universal Clutch Aligner Set

9AK11-1

- Designed to make alignment and assembly of clutch
- Specially designed for those vehicles equipped with late-model front wheel drives without pilot bearing in flywheel



3
PC.



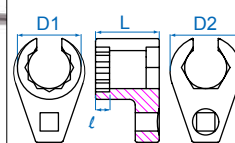
KT NO.	Ø mm	kg	
9AK11-1	15~28	0.60	12 / 48

Oxygen Sensor Socket

9AJ3122

3/8"

- For installing and removing oxygen sensors

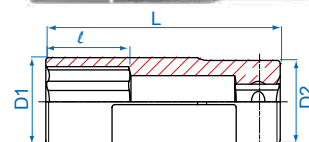


KT NO.	mm	D1 mm	D2 mm	l mm	L mm	kg	
9AJ3122	22	34	38	8	34	178	1 / 100

9AJ4322

1/2"

- For oxygen sensors
- Featuring a slot for the connecting lead



KT NO.	mm	D1 mm	D2 mm	l mm	L mm	kg	
9AJ4322	22	32	30	30	85	294	5 / 60