


## Broken Screw Extractor and Drill-Bit Set

### 11310SQ

- Material : Drill-Bit(HSS), screw extractor(GCr15)
- Metal case size (mm) :149 x 115 x 24 (0.014 cuft)

Contents		kg 0.4	1 / 40
		ø2.5, ø3, ø4.5, ø6, ø8	
	#1	M3 - M6 1/8" - 1/4"	
	#2	M6 - M8 1/4" - 5/16"	
	#3	M8 - M11 5/16" - 7/16"	
	#4	M11 - M14 7/16" - 9/16"	
	#5	M14 - M18 9/16" - 3/4"	







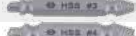
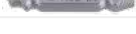
10  
PC.

## Speed Out Broken Screw Extractor Set

### 11406SQ

- For stripped, broken, stuck or damaged screw removal
- Size includes: #0, #1, #2, #3, #4
- High hardness HSS material makes drilling easier and faster
- The screw extractor set is tested with quality, efficiency, durability and stability

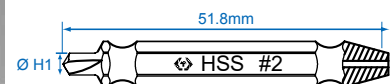
g 82 12 / 96

Specifications	Drill Size Ø H1	Suitable for Screw Diameter
	2.5	2-3mm
	3.0	3-5mm
	3.5	4-8mm
	3.5	4-8mm
	4.0	5-10mm
	6.0	6-12mm



6  
PC.

3 steps:



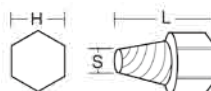
### 11015SQ

**New**

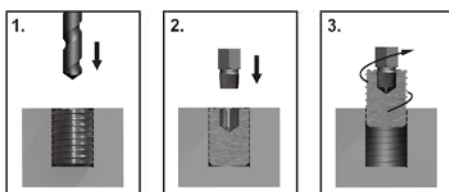
- Ideal tool for removing rounded/damaged/stuck bolts
- Material: 8660 steel
- Hardness: HRC49-52

g 0.53 1 / 20

Hex size(H) mm	inch	Size(S) mm	Overall length(L) mm
12	1/8", 3/16", 1/4", 3/8"	3, 4, 5, 5.5, 6, 8, 10	29
16	1/2"	11, 12, 14	



15  
PC.



- Operation:
  - Drilling a hole which is 0.5mm bigger than the extractor on the bolt
  - Insert the extractor in the bolt
  - Turn counter clockwise to remove the bolt
- Note: This is a manual operated tool, do not use with impact or power tools