

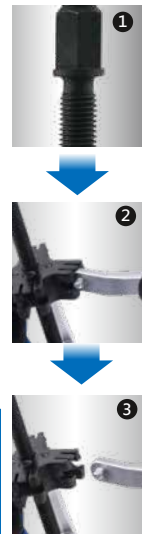
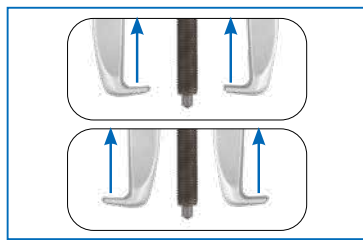
Ratcheting Gear Puller

New

7963C

- A dual-use ratcheting gear puller can be self-adjusted to 2 or 3 jaws according to usage
- The ratchet-style claw structure enables quicker and more convenient jaws replacement operation
- The ratchet-style jaw structure allows for swift adjustment of the range of use
- Reversible jaws can be used for internal and external gears, axles, bearings, etc

KT NO.	Capacity (Tons)	Jaws (leg)	Spread A(mm)	Reach B(mm)	HEX (mm)	kg	1/36
7963C-03	2T	2&3	50~76	45	13	0.45	1 / 36
7963C-05	5T	2&3	101~127	75	17	1.50	1 / 12
7963C-08	8T	2&3	127~200	172	17	2.89	1 / 6

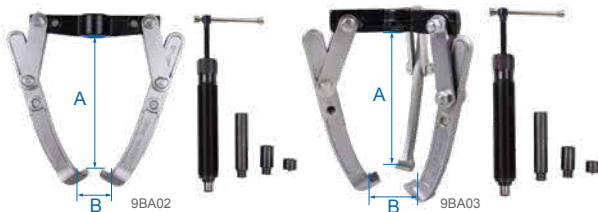


- Quick and easy replacement with ratchet-style jaw structure

Hydraulic Mechanical Pullers

9BA

- Quick and safe removal particularly large and tight gears, bearings, etc...
- Two and three jaws type, use for different space



KT NO.	Capacity (Tons)	Jaws (leg)	Reach A(mm)	Spread B(mm)	kg	1/1
9BA02	15T	2	320	500	11.30	1 / 1
9BA03	15T	3	320	500	16.50	1 / 1

Universal Bearing Puller Set



9BA31

- Easy and fast removing ball bearing by using the puller
- Select proper tips by ball diameter

CONTENTS :

- 1 PC. Puller yoke M6 x1.0 and center screw Hex 12mm x160mmL
- 1 PC. Top Nut
- 2 PC. Extension rod x L 105mm Ball ended threaded adapter
- 2 PC. 5.5mm / 2 PC. 6.0mm / 2 PC. 8.0mm

kg 1.33 1 / 12



10 PC.



9BA32

1/2"

- Easy and fast removing ball bearing by using the puller
- Select proper tips by ball diameter

CONTENTS :

- 1 PC. Puller yoke 3/8-16UNC and center screw Hex 14mm x175mmL
- 1 PC. Top Nut
- 2 PC. Extension rod x L 100mm Ball ended threaded adapter
- 2 PC. 11.0mm / 2 PC. 12.5mm / 2 PC. 15.0mm

kg 2.00 1 / 12



10 PC.

