

# Accessory

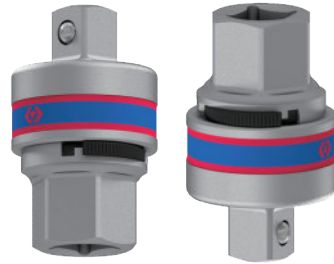
KT No. & D1



4844P **new**

1/2"

- 1/2 " drive (1/2 " F x 1/2 " M)
- Finish : Chrome Alloy Steel, chrome plated
- Reversible
- 5° gear action degree (72 teeth)
- Apply to 1/2" accessory (Ex : 4453-15F)
- Apply to 1/2" torque wrench (Ex : 3446E series)



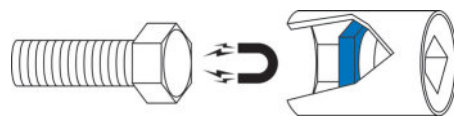
**PAT.**

Outer diameter 37 x Height 62 mm

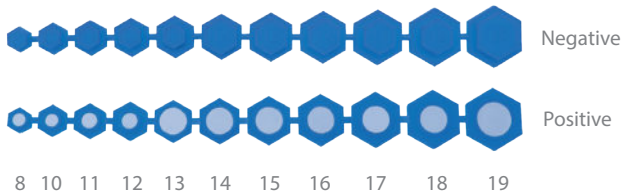
# Magnetic Insert

91000M **new**

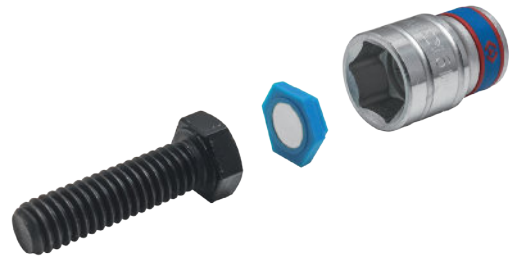
- Magnetic insert for sockets
- Powerful retention force
- Reusable
- 11-piece set, for metric sockets



11 PC.



8 10 11 12 13 14 15 16 17 18 19



KT NO.	Size (mm)		
91000M	8, 10, 11, 12, 13, 14, 15, 16, 17, 18, 19 mm	42	12 / 144

