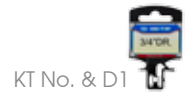


Deep Socket

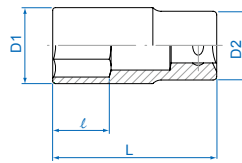
- Chrome vanadium alloy steel
- Polished, chrome plated
- 4 ball retaining grooves



6235M

3/4"

- DIN 3124
- ISO 2725-1



KT NO.	mm	D1 mm	D2 mm	l mm	L mm	g	kg
623517M	17	26.0	32.7	20	90	388	2 / 48
623518M	18	28.0	32.7	20	90	411	2 / 48
623519M	19	30.0	32.7	20	90	437	2 / 48
623520M	20	31.0	32.7	22	90	440	2 / 48
623521M	21	32.0	32.7	22	90	444	2 / 48
623522M	22	33.0	35.7	22	90	460	2 / 48
623523M	23	34.0	35.7	24	90	462	2 / 48
623524M	24	35.0	35.7	24	90	477	2 / 48
623525M	25	35.0	35.7	25	90	464	2 / 48
623526M	26	35.7	35.0	25	90	433	1 / 24
623527M	27	38.0	36.0	28	90	431	1 / 24
623528M	28	39.0	36.0	28	90	477	1 / 24
623529M	29	40.0	38.0	28	90	502	1 / 24
623530M	30	42.0	38.0	31	90	584	1 / 24
623531M	31	43.0	38.0	34	90	580	1 / 24
623532M	32	44.0	38.0	34	90	580	1 / 24
623533M	33	46.0	39.0	34	90	646	1 / 24
623534M	34	47.0	42.0	34	90	717	1 / 24
623535M	35	48.0	42.0	37	90	677	1 / 24
623536M	36	50.0	42.0	37	90	724	1 / 24
623537M	37	51.0	45.0	37	90	891	1 / 24
623538M	38	52.0	45.0	41	90	913	1 / 24
623539M	39	53.0	45.0	41	90	935	1 / 24
623540M	40	54.0	45.0	41	90	911	1 / 24

KT NO.	mm	D1 mm	D2 mm	l mm	L mm	g	kg
623541M	41	56.0	45.0	41	90	864	1 / 24
623542M	42	57.0	45.0	46	95	913	1 / 24
623543M	43	58.0	45.0	46	95	971	1 / 10
623544M	44	60.0	48.0	46	95	1066	1 / 10
623545M	45	61.0	48.0	46	95	1073	1 / 10
623546M	46	62.0	48.0	46	95	1093	1 / 10
623547M	47	63.0	48.0	46	95	1102	1 / 10
623548M	48	64.0	48.0	50	95	1093	1 / 10
623549M	49	66.0	48.0	50	95	1035	1 / 10
623550M	50	68.0	48.0	50	95	1220	1 / 10
623551M	51	69.0	50.0	50	95	1282	1 / 10
623552M	52	69.0	50.0	50	95	1244	1 / 10
623553M	53	70.0	50.0	50	95	1262	1 / 10
623554M	54	72.0	50.0	50	95	1342	1 / 10
623555M	55	74.0	50.0	50	95	1268	1 / 10
623556M	56	75.0	50.0	50	95	1440	1 / 10
623557M	57	76.0	50.0	52	100	1555	1 / 10
623558M	58	78.0	50.0	52	100	1540	1 / 10
623559M	59	78.0	50.0	52	100	1604	1 / 10
623560M	60	80.0	50.0	53	100	1662	1 / 10
new 623563M	63	83.0	55.0	53	100	1680	1 / 12
new 623565M	65	85.0	58.0	55	100	1735	1 / 12
new 623570M	70	92.0	58.0	55	100	1979	1 / 12

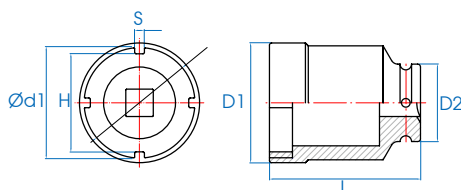
Axial Lock Nut Socket

- Material - chrome vanadium steel
- Finishing - phosphate sunk

64K9M

3/4"

- Special for SKF bearing.



KT NO.	Designation	mm	H mm	S mm	D1 mm	D2 mm	Ød1 mm	g	L mm	kg
64K975M	TMFS 11	75	69.4	6.8	83.5	54	77	1600	105	1 / 6