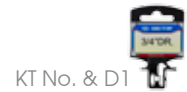


Standard Socket

- Chrome vanadium alloy steel
- Polished, chrome plated
- 4 ball retaining grooves

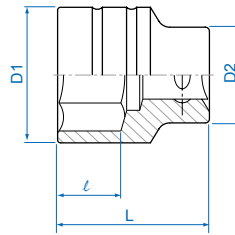


KT No. & D1

6335M

3/4"

• DIN 3124, ISO 2725-1

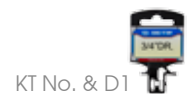


KT NO.	Ø mm	D1 mm	D2 mm	ℓ mm	L mm	g	kg
633517M	17	26.0	32.7	14	51	187	8 / 96
633518M	18	28.0	32.7	14	51	196	8 / 96
633519M	19	30.0	32.7	14	51	207	8 / 96
633520M	20	31.0	32.7	16	51	209	8 / 96
633521M	21	32.0	32.7	16	51	210	8 / 96
633522M	22	33.0	35.7	16	51	209	8 / 96
633523M	23	34.0	35.7	16	51	216	8 / 96
633524M	24	35.0	35.7	17	51	219	8 / 96
633525M	25	35.0	35.7	17	52	240	8 / 96
633526M	26	35.7	35.0	17	52	243	8 / 96
633527M	27	38.0	36.0	19	52	238	8 / 96
633528M	28	39.0	36.0	19	52	233	8 / 96
633529M	29	40.0	38.0	19	52	261	8 / 96
633530M	30	42.0	38.0	21	54	295	6 / 48
633531M	31	43.0	38.0	23	55	305	6 / 48
633532M	32	44.0	38.0	23	56	317	6 / 48
633533M	33	46.0	39.0	23	56	351	6 / 48
633534M	34	47.0	42.0	24	57	400	6 / 48
633535M	35	48.0	42.0	25	58	406	6 / 36
633536M	36	50.0	42.0	25	58	434	6 / 36
633537M	37	51.0	45.0	25	59	485	6 / 36
633538M	38	52.0	45.0	27	60	497	6 / 36
633539M	39	53.0	45.0	28	61	520	4 / 32
633540M	40	54.0	45.0	28	62	540	4 / 32

KT NO.	Ø mm	D1 mm	D2 mm	ℓ mm	L mm	g	kg
633541M	41	56.0	45.0	29	64	581	4 / 32
633542M	42	57.0	45.0	29	64	591	4 / 32
633543M	43	58.0	45.0	29	65	620	4 / 32
633544M	44	60.0	48.0	31	66	695	4 / 32
633545M	45	61.0	48.0	33	67	715	4 / 32
633546M	46	62.0	48.0	33	68	724	4 / 32
633547M	47	63.0	48.0	33	69	755	4 / 32
633548M	48	64.0	48.0	34	70	775	2 / 24
633549M	49	66.0	48.0	34	70	810	2 / 24
633550M	50	68.0	48.0	34	72	889	2 / 24
633551M	51	69.0	50.0	35	73	895	1 / 20
633552M	52	69.0	50.0	35	73	905	1 / 20
633553M	53	70.0	50.0	35	74	975	1 / 20
633554M	54	72.0	50.0	35	75	1010	1 / 20
633555M	55	74.0	50.0	37	76	1095	1 / 20
633556M	56	75.0	50.0	37	76	1145	1 / 20
633557M	57	76.0	50.0	37	76	1195	1 / 20
633558M	58	77.0	50.0	37	78	1225	1 / 20
633559M	59	78.0	50.0	37	78	1250	1 / 20
633560M	60	80.0	50.0	40	78	1275	1 / 20
633563M	63	83.0	55.0	40	81	1390	1 / 12
633565M	65	85.0	58.0	43	83	1510	1 / 12
633570M	70	92.0	58.0	46	88	1805	1 / 12

Deep Socket

- Chrome vanadium alloy steel
- Polished, chrome plated
- 4 ball retaining grooves

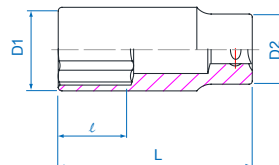


KT No. & D1

6230M

3/4"

• DIN 3124, ISO 2725-1



KT NO.	Ø mm	D1 mm	D2 mm	ℓ mm	L mm	g	kg
623032M	32	44.0	38.0	34	90	580	1 / 24
623033M	33	46.0	39.0	34	90	646	1 / 24
623036M	36	50.0	42.0	37	90	724	1 / 24
623039M	39	53.0	45.0	41	90	935	1 / 24

KT NO.	Ø mm	D1 mm	D2 mm	ℓ mm	L mm	g	kg
623041M	41	56.0	45.0	41	90	864	1 / 24
623046M	46	62.0	48.0	46	95	1093	1 / 10
623050M	50	68.0	48.0	50	95	1220	1 / 10