

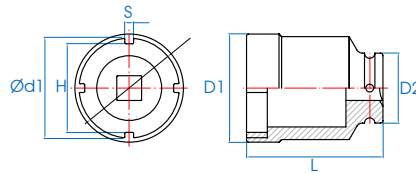
Axial Lock Nut Socket

- Material - chrome vanadium steel
- Finishing - phosphate sunk

44K9M

1/2"

- Specially for SKF bearing



KT NO.	Designation	mm	H mm	S mm	D1 mm	D2 mm	Ød1 mm	L mm	g	kg
44K928M	TMFS 3	28	24.4	3.8	36	30	30	90	382	1 / 24
44K932M	TMFS 4	32	28.4	3.8	38	30	34	90	378	1 / 24
44K938M	TMFS 5	38	34.4	4.8	46	30	40	90	559	1 / 24

Bit Socket

- Socket made by chrome vanadium alloy steel
- Bit made by silicon alloy steel (S2)
- Polished, chrome plated



In order to get normal life of bit socket, always use within limited torque to bit.



4021

1/2"

- Phillips head
- DIN ISO 8764-1



KT NO.	No.	Overall length mm	g	kg
402102	PH2	60	77	10 / 180
402103	PH3	60	77	10 / 180
402104	PH4	60	77	10 / 180

4022

1/2"

- Slotted head
- DIN ISO 5264/3120



KT NO.	Tip width mm	Tip thickness mm	Overall length mm	g	kg
402208	8	1.2	60	77	10 / 180
402210	10	1.6	60	83	10 / 180
402212	12	2.0	60	110	10 / 180
402214	14	2.5	60	112	10 / 180
402216	16	2.5	60	113	10 / 180

40D5

1/2"

- Hexagon head
- DIN 7422



KT NO.	mm	Overall length mm	g	kg
40D506	H6	140	102	6 / 120
40D508	H8	140	104	6 / 120
40D510	H10	140	133	6 / 120

4025

1/2"

- Hexagon head
- DIN 7422



KT NO.	mm / Inch	Overall length mm	g	kg
402503	H3	60	68	10 / 180
402504	H4	60	68	10 / 180
402505	H5	60	70	10 / 180
402506	H6	60	72	10 / 180
402507	H7	60	75	10 / 180
402508	H8	60	75	10 / 180
new 402509	H9	60	79	10 / 180
402510	H10	60	85	10 / 180
402512	H12	60	117	10 / 180
402514	H14	60	120	10 / 180
402517	H17	66	153	10 / 100
402519	H19	66	225	10 / 120
402506S	3/16	60	66	10 / 180
402507S	7/32	60	68	10 / 180
402508S	1/4	60	69	10 / 180
402509S	9/32	60	70	10 / 180
402510S	5/16	60	74	10 / 180
402512S	3/8	60	83	10 / 180
402514S	7/16	60	100	10 / 180
402516S	1/2	60	110	10 / 180
402518S	9/16	66	157	12 / 120
402520S	5/8	66	162	12 / 120
402524S	3/4	66	225	10 / 120