

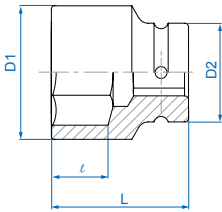
# Standard Impact Socket

- Material - chrome molybdenum alloy steel
- Finishing - phosphate sunk

## 8535M



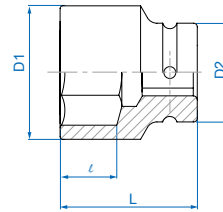
- DIN 3129, ISO 2725-2



## 8535S



- ANSI/ASME B107.2



KT NO.	Ø mm	D1 mm	D2 mm	ℓ mm	L mm		
853519M	19	35	54	15	58	508	1 / 24
853521M	21	37	54	15	58	529	1 / 24
853522M	22	38	54	15	58	520	1 / 24
853523M	23	39	54	17	58	542	1 / 24
853524M	24	41	54	17	58	529	1 / 24
853525M	25	42	54	17	58	567	1 / 24
853526M	26	43	54	19	58	558	1 / 24
853527M	27	44	54	19	58	538	1 / 24
853528M	28	45	54	19	58	538	1 / 24
853529M	29	47	54	19	58	600	1 / 24
853530M	30	48	54	20	60	592	1 / 24
853532M	32	51	54	20	62	679	1 / 24
853533M	33	52	54	20	62	700	1 / 24
853534M	34	53	54	20	62	766	1 / 24
853535M	35	54	54	20	62	779	1 / 24
853536M	36	56	54	20	65	729	1 / 24
853538M	38	58	54	22	65	742	1 / 24
853540M	40	60	54	22	65	800	1 / 24
853541M	41	61	54	22	70	846	1 / 24
853542M	42	64	54	22	70	890	1 / 20
853544M	44	67	54	26	70	1000	1 / 20
853546M	46	68	54	26	75	1075	1 / 20
853548M	48	70	54	26	75	1085	1 / 20
853550M	50	73	54	26	75	1170	1 / 20
853552M	52	75	54	30	80	1300	1 / 12
853553M	53	76	54	30	80	1300	1 / 12
853554M	54	78	54	30	80	1400	1 / 12
853555M	55	79	54	32	83	1433	1 / 12
853558M	58	83	54	32	83	1542	1 / 12
853560M	60	86	54	32	87	1758	1 / 12
853563M	63	90	54	34	87	1750	1 / 12
853565M	65	92	54	34	90	1758	1 / 12
853566M	66	94	54	34	90	1966	1 / 12
853568M	68	95	54	34	90	1966	1 / 12
853570M	70	97	54	34	93	2112	1 / 8
853571M	71	99	86	36	93	2925	1 / 8
853575M	75	104	86	36	95	3188	1 / 8
853580M	80	110	86	43	95	3350	1 / 4
853585M	85	115	86	43	95	3250	1 / 4
853590M	90	122	86	43	100	3950	1 / 4
853595M	95	130	95	52	105	4290	1 / 2
8535A0M	100	136	95	51	105	4600	1 / 2

KT NO.	Ø inch	D1 mm	D2 mm	ℓ mm	L mm		
853524S	3/4	35	54	15	58	508	1 / 24
853526S	13/16	37	54	15	58	529	1 / 24
853528S	7/8	38	54	15	58	520	1 / 24
853530S	15/16	41	54	17	58	529	1 / 24
853532S	1	42	54	17	58	567	1 / 24
853534S	1-1/16	44	54	19	58	538	1 / 24
853536S	1-1/8	47	54	19	58	600	1 / 24
853538S	1-3/16	48	54	20	60	592	1 / 24
853540S	1-1/4	51	54	20	62	679	1 / 24
853542S	1-5/16	52	54	20	62	700	1 / 24
853544S	1-3/8	54	54	20	62	779	1 / 24
853546S	1-7/16	56	54	20	65	729	1 / 24
853548S	1-1/2	58	54	22	65	742	1 / 24
853550S	1-9/16	60	54	22	65	800	1 / 24
853552S	1-5/8	61	54	22	70	846	1 / 24
853554S	1-11/16	64	54	22	70	890	1 / 20
853556S	1-3/4	67	54	26	70	1000	1 / 20
853558S	1-13/16	68	54	26	75	1075	1 / 20
853560S	1-7/8	70	54	26	75	1085	1 / 20
853562S	1-15/16	72	54	26	75	1140	1 / 20
853564S	2	74	54	30	75	1235	1 / 20
853566S	2-1/16	75	54	30	80	1300	1 / 12
853568S	2-1/8	78	54	30	80	1400	1 / 12
853570S	2-3/16	79	54	32	83	1433	1 / 12
853572S	2-1/4	82	54	32	83	1500	1 / 12
853574S	2-5/16	83	54	32	83	1542	1 / 12
853576S	2-3/8	86	54	32	87	1758	1 / 12
853578S	2-7/16	88	54	34	87	1760	1 / 12
853580S	2-1/2	90	54	34	87	1750	1 / 12
853582S	2-9/16	92	54	34	90	1758	1 / 12
853584S	2-5/8	94	54	34	90	1966	1 / 12
853586S	2-11/16	95	54	34	90	1966	1 / 12
853588S	2-3/4	97	54	34	93	2112	1 / 8
853590S	2-13/16	99	86	36	93	2925	1 / 8
853592S	2-7/8	102	86	36	93	3050	1 / 8
853594S	2-15/16	104	86	36	95	3188	1 / 8
853596S	3	106	86	36	95	3205	1 / 8
8535A0S	3-1/8	110	86	43	95	3350	1 / 4
8535A4S	3-1/4	112	86	43	95	3300	1 / 4
8535A8S	3-3/8	117	86	43	100	3550	1 / 4
8535B2S	3-1/2	122	86	43	100	3950	1 / 4