

Stubby Impact Socket

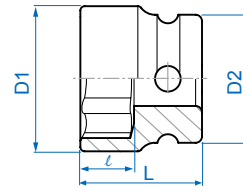
- Material - chrome molybdenum alloy steel
- Finishing - phosphate sunk

4525M

1/2"

- For impact wrench use
- DIN 3129, ISO 2725-2

KT NO.	mm	D1 mm	D2 mm	ℓ mm	L mm		
new 452513M	13	20	26	5.5	28.5	75	10 / 160
new 452514M	14	22	26	5.5	28.5	73	10 / 160
452517M	17	26	26	5.5	28.5	66	10 / 160
452519M	19	28	26	10	28.5	64	10 / 160
452521M	21	30	30	10	28.5	82	8 / 160
452522M	22	32	30	10	28.5	88	8 / 160
452524M	24	34	30	10	28.5	97	6 / 120

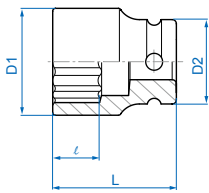


Standard Impact Socket

4530M

1/2"

- DIN 3129, ISO 2725-2

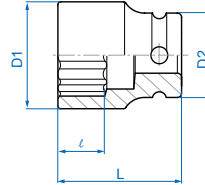


KT NO.	mm	D1 mm	D2 mm	ℓ mm	L mm		
453008M	8	15.0	25	7	38	67	10 / 200
453009M	9	16.3	25	7	38	67	10 / 200
453010M	10	17.6	25	8	38	70	10 / 200
453011M	11	18.8	25	8	38	71	10 / 200
453012M	12	20.0	25	9	38	72	10 / 200
453013M	13	21.2	25	10	38	72	10 / 200
453014M	14	22.5	25	10	38	77	10 / 200
453015M	15	23.8	30	11	38	112	10 / 160
453016M	16	25.0	30	11	38	112	10 / 160
453017M	17	26.2	30	12	38	115	10 / 160
453018M	18	27.5	30	13	38	115	10 / 160
453019M	19	28.8	30	13	38	120	10 / 160
453020M	20	29.5	30	13	38	120	10 / 160
453021M	21	30.0	30	14	40	125	8 / 160
453022M	22	32.4	30	14	40	143	8 / 160
453023M	23	33.2	30	15	40	143	8 / 160
453024M	24	34.4	30	15	42	152	6 / 120
453025M	25	36.0	30	15	42	168	6 / 120
453026M	26	37.0	30	15	42	173	6 / 120
453027M	27	38.0	30	16	44	176	6 / 120
453028M	28	41.0	30	16	44	194	6 / 120
453029M	29	41.0	30	17	44	194	6 / 120
453030M	30	42.0	30.5	17	44	201	6 / 120
453032M	32	46.0	30	19	44	205	6 / 120
453033M	33	46.0	30	19	46	227	6 / 96
453034M	34	46.0	30	20	46	231	6 / 96
453036M	36	47.0	30	20	46	248	6 / 96
453038M	38	50.0	30	21	50	248	6 / 60
453041M	41	52.0	30	22	52	248	6 / 60

4530S

1/2"

- ANSI/ASME B107.2



KT NO.	inch	D1 mm	D2 mm	ℓ mm	L mm		
453016S	1/2	20	25	10	38	71	10 / 200
453018S	9/16	22	25	10	38	77	10 / 200
453020S	5/8	24	25	11	38	111	10 / 160
453022S	11/16	26	30	12	38	116	10 / 160
453024S	3/4	28	30	13	38	119	10 / 160
453026S	13/16	30	30	14	40	125	8 / 160
453028S	7/8	32	30	14	40	141	8 / 160
453030S	15/16	34	30	15	42	152	6 / 120
453032S	1	36	30	15	42	168	6 / 120
453034S	1-1/16	38	30	16	44	176	6 / 120
453036S	1-1/8	41	30	17	44	194	6 / 120
453038S	1-3/16	42	30.5	17	44	209	6 / 120