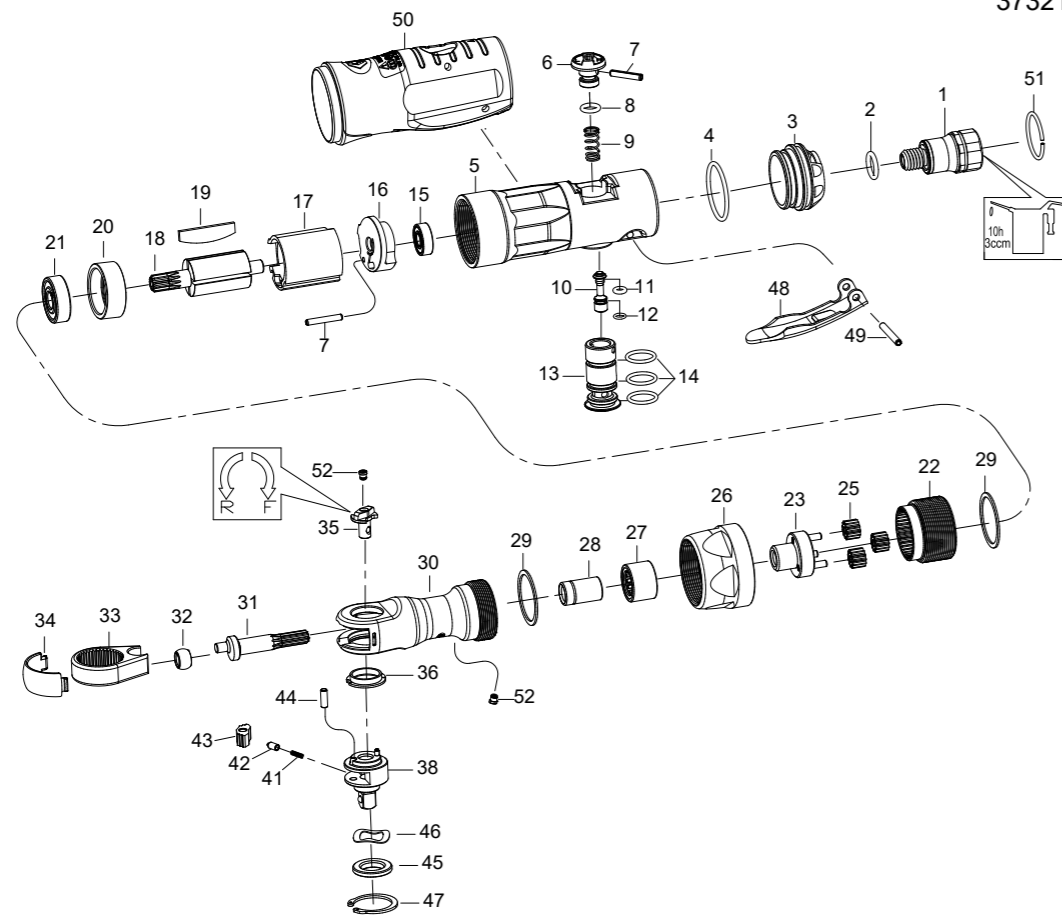


3/8" DR. RATCHET WRENCH



NO.37321-050
37321-051



INDEX NO.	KT No.	DESCRIPTION	REQ'D NO.	INDEX NO.	KT No.	DESCRIPTION	REQ'D NO.
1	037221-A01	Air Inlet (for 19 BSPT)	1	27	037221-A27	Needle Bearing	1
1A	037221-A01A	Air Inlet (for 18 NPT)	1	28	037221-A28	Bushing	1
2	037221-A02	O-Ring	1	29	037221-A29	Spacer	2
3	037221-A03	Exhaust Deflector	1	★30	037221-A30	Ratchet Housing Assembly (incl. 52)	1
4	037221-A04	O-Ring	1	31	037221-A31	Crank shaft	1
5	037221-A05	Motor Housing	1	32	037221-A32	Drive Bushing	1
6	037221-A06	Air Regulator	1	33	037221-A33	Ratchet Yoke	1
7	037221-A07	Pin	2	34	037221-A34	Ratchet Housing Cover	1
8	037221-A08	O-Ring	1	★35	037321-A35	Reverse Knob Assembly (incl. 52)	1
9	037221-A09	Spring	1	36	037221-A36	Thrust Washer	1
10	037221-A10	Throttle Valve Plunger	1	38	037321-A38	Ratchet Anvil Assembly	1
11	037221-A11	O-Ring	1	41	037221-A41	Ratchet Spring	1
12	037221-A12	O-Ring	1	42	037221-A42	Ratchet Lock Pin	1
13	037321-A13	Power Regulator	1	43	037221-A43	Ratchet Pawl	1
14	037221-A14	O-Ring	3	44	037221-A44	Pawl Retaining Pin	1
15	037221-A15	Bearing	1	45	037221-A45	Thrust Washer	1
16	037221-A16	End Plate	1	46	037221-A46	Wave Washer	1
17	037221-A17	Cylinder	1	47	037221-A47	Retaining Ring	1
18	037221-A18	Rotor	1	48	037221-A48	Trigger	1
19	037221-A19	Rotor Blade	4	49	033851-B14	Pin	1
20	037221-A20	End Plate	1	50	037221-A50	Rubber Grip	1
21	037221-A21	Bearing	1	51	037221-A51	Retainer	1
22	037221-A22	Ring Gear	1	●52	037221-A52	Grease Fitting	2
23	037221-A23	Work Spindle Assembly	1	TK-01	037321-ATK1	Ratchet Anvil Assembly (incl. 35.38.41.42.43.44.52)	1
25	037221-A25	Planet Gear	3				
26	037221-A26	Coupling Nut	1	TK	037221-ATK	Tune-Up Kit (incl. 2.4.8.9.11.12.14 (3))	

★ Must be purchased in assembly set

● Recommended not to be purchased alone due to assembly difficulty

20131206R3

Air Pressure : 6.2 Bar (90 PSI)

Inspec. Item No.	Square drive	Std. Bolt Size		Free Speed R.P.M	MAX. Torque		Overall Length		Air Inlet BSPT/NPT	Air Hose ID	Avg. Air Consumption		Net Weight		Sound Pressure Level A-weighted	Sound Power Level A-weighted	Sound Pressure Valve Peak C-weighted	Vib. M/S2
		inch	mm		ft-lb	N.m	inch	mm			cfm	l/min	lbs	kgs				
37321-050	3/8	5/16	M8	270	50	68	8-1/16	205	1/4" BSPT	3/8	2.8	79	1.48	0.67	93.00	104.00	94.00	2.26
37321-051	3/8	5/16	M8	270	50	68	8-1/16	205	1/4" NPT	3/8	2.8	79	1.48	0.67	93.00	104.00	94.00	2.26

http : //www.kingtony.com 8937321050-KT 192x288mm



KING TONY TOOLS CO., LTD.
No. 11, Alley 150, Lane 516, Sec. 2, Hsi Nan Rd.,
Wu-Jih Dist., Taichung City, Taiwan
Tel : 886-4-2335-3567 Fax : 886-4-2335-3642

**EC DECLARATION OF CONFORMITY
FOR NON-ANNEX IV MACHINERY
IN ACCORDANCE WITH
MACHINERY SAFETY DIRECTIVES**

2006 / 42 / EC

**IMPACT WRENCH
OPERATOR'S INSTRUCTION**

This impact wrench has the CE approval

WE, **KING TONY TOOLS CO., LTD.** HEREBY CERTIFY THAT THE MACHINERY DESCRIBED BELOW CONFORMS WITH THE ESSENTIAL HEALTH AND SAFETY REQUIREMENTS OF MACHINERY SAFETY DIRECTIVES 2006/42/EC ON THE APPROXIMATION OF THE LAWS OF THE MEMBER STATES RELATING TO THE SAFETY OF MACHINERY,

IMPACT WRENCH

37321-050

AND COMPLY WITH THE PROVISIONS SET OUT IN THE FOLLOWING EUROPEAN STANDARD:

ISO 12100:2010 (RISK ASSESSMENT & RISK REDUCTION)

ISO 11148-6:2012 (SAFETY REQUIREMENTS)

ISO 15744:2002 (NOISE LEVEL)

ISO 28927-2:2009 (VIBRATION LEVEL)

DATE OF ISSUE: 7th January 2014

NAME: Lin Hsien-Wen

POSITION/TITLE: General manager

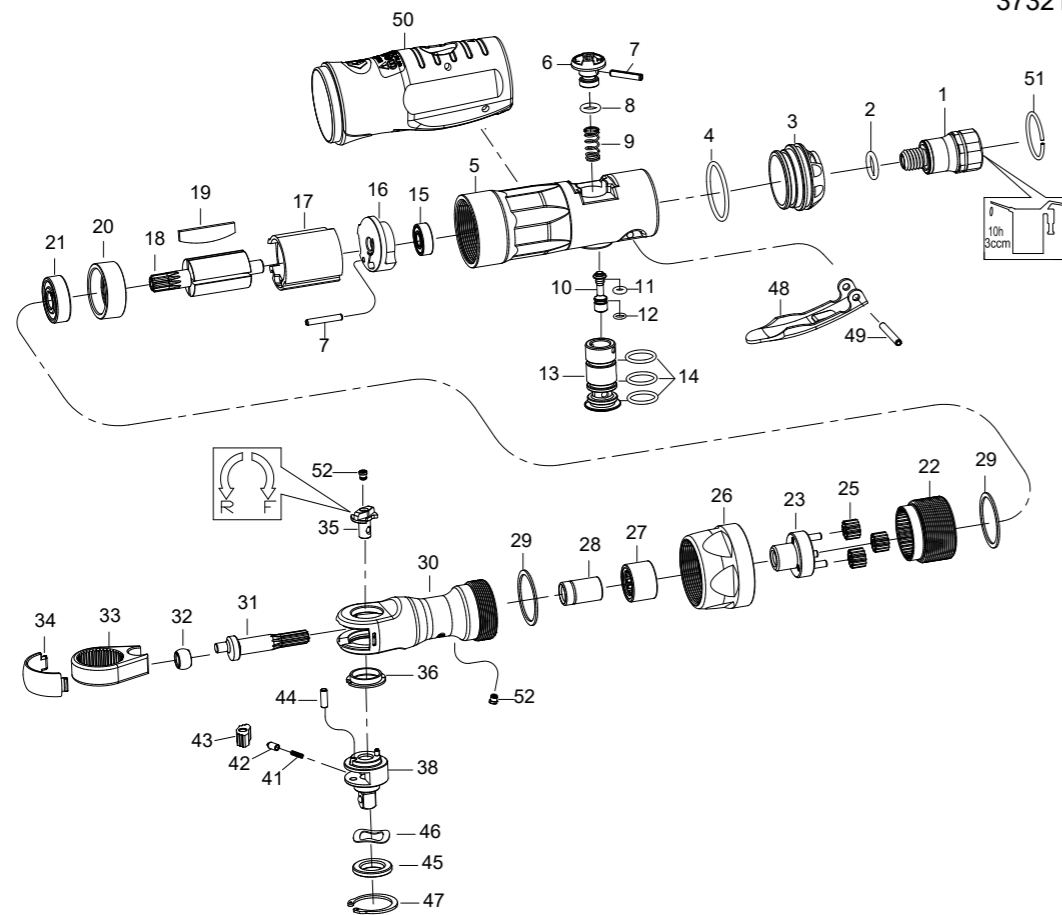
SIGNATURE: *Lin Hsien-Wen*



3/8" DR. RATCHET WRENCH



NO.37321-050
37321-051



INDEX NO.	KT No.	DESCRIPTION	REQ'D NO.	INDEX NO.	KT No.	DESCRIPTION	REQ'D NO.
1	037221-A01	Air Inlet (for 19 BSPT)	1	27	037221-A27	Needle Bearing	1
1A	037221-A01A	Air Inlet (for 18 NPT)	1	28	037221-A28	Bushing	1
2	037221-A02	O-Ring	1	29	037221-A29	Spacer	2
3	037221-A03	Exhaust Deflector	1	★30	037221-A30	Ratchet Housing Assembly (incl. 52)	1
4	037221-A04	O-Ring	1	31	037221-A31	Crank shaft	1
5	037221-A05	Motor Housing	1	32	037221-A32	Drive Bushing	1
6	037221-A06	Air Regulator	1	33	037221-A33	Ratchet Yoke	1
7	037221-A07	Pin	2	34	037221-A34	Ratchet Housing Cover	1
8	037221-A08	O-Ring	1	★35	037321-A35	Reverse Knob Assembly (incl. 52)	1
9	037221-A09	Spring	1	36	037221-A36	Thrust Washer	1
10	037221-A10	Throttle Valve Plunger	1	38	037321-A38	Ratchet Anvil Assembly	1
11	037221-A11	O-Ring	1	41	037221-A41	Ratchet Spring	1
12	037221-A12	O-Ring	1	42	037221-A42	Ratchet Lock Pin	1
13	037321-A13	Power Regulator	1	43	037221-A43	Ratchet Pawl	1
14	037221-A14	O-Ring	3	44	037221-A44	Pawl Retaining Pin	1
15	037221-A15	Bearing	1	45	037221-A45	Thrust Washer	1
16	037221-A16	End Plate	1	46	037221-A46	Wave Washer	1
17	037221-A17	Cylinder	1	47	037221-A47	Retaining Ring	1
18	037221-A18	Rotor	1	48	037221-A48	Trigger	1
19	037221-A19	Rotor Blade	4	49	033851-B14	Pin	1
20	037221-A20	End Plate	1	50	037221-A50	Rubber Grip	1
21	037221-A21	Bearing	1	51	037221-A51	Retainer	1
22	037221-A22	Ring Gear	1	●52	037221-A52	Grease Fitting	2
23	037221-A23	Work Spindle Assembly	1	TK-01	037321-ATK1	Ratchet Anvil Assembly (incl. 35.38.41.42.43.44.52)	1
25	037221-A25	Planet Gear	3				
26	037221-A26	Coupling Nut	1	TK	037221-ATK	Tune-Up Kit (incl. 2.4.8.9.11.12.14 (3))	1

★ Must be purchased in assembly set

● Recommended not to be purchased alone due to assembly difficulty

20131206R3

Air Pressure : 6.2 Bar (90 PSI)

Inspec. Item No.	Square drive	Std. Bolt Size		Free Speed R.P.M	MAX. Torque		Overall Length		Air Inlet BSPT/NPT	Air Hose ID	Avg. Air Consumption		Net Weight		Sound Pressure Level A-weighted	Sound Power Level A-weighted	Sound Pressure Valve Peak C-weighted	Vib. M/S2
		inch	mm		ft-lb	N.m	inch	mm			cfm	l/min	lbs	kgs				
37321-050	3/8	5/16	M8	270	50	68	8-1/16	205	1/4" BSPT	3/8	2.8	79	1.48	0.67	93.00	104.00	94.00	2.26
37321-051	3/8	5/16	M8	270	50	68	8-1/16	205	1/4" NPT	3/8	2.8	79	1.48	0.67	93.00	104.00	94.00	2.26

http : //www.kingtony.com 8937321050-KT 192x288mm



KING TONY TOOLS CO., LTD.
No. 11, Alley 150, Lane 516, Sec. 2, Hsi Nan Rd.,
Wu-Jih Dist., Taichung City, Taiwan
Tel : 886-4-2335-3567 Fax : 886-4-2335-3642

**EC DECLARATION OF CONFORMITY
FOR NON-ANNEX IV MACHINERY
IN ACCORDANCE WITH
MACHINERY SAFETY DIRECTIVES
2006 / 42/ EC**

IMPACT WRENCH OPERATOR'S INSTRUCTION

This impact wrench has the CE approval

WE, **KING TONY TOOLS CO., LTD.** HEREBY CERTIFY THAT THE MACHINERY DESCRIBED BELOW CONFORMS WITH THE ESSENTIAL HEALTH AND SAFETY REQUIREMENTS OF MACHINERY SAFETY DIRECTIVES 2006/42/EC ON THE APPROXIMATION OF THE LAWS OF THE MEMBER STATES RELATING TO THE SAFETY OF MACHINERY,

IMPACT WRENCH

37321-051

AND COMPLY WITH THE PROVISIONS SET OUT IN THE FOLLOWING EUROPEAN STANDARD:

ISO 12100:2010 (RISK ASSESSMENT & RISK REDUCTION)

ISO 11148-6:2012 (SAFETY REQUIREMENTS)

ISO 15744:2002 (NOISE LEVEL)

ISO 28927-2:2009 (VIBRATION LEVEL)



DATE OF ISSUE: 7th January 2014

NAME: Lin Hsien-Wen

POSITION/TITLE: General manager

SIGNATURE: *Lin Hsien-Wen*