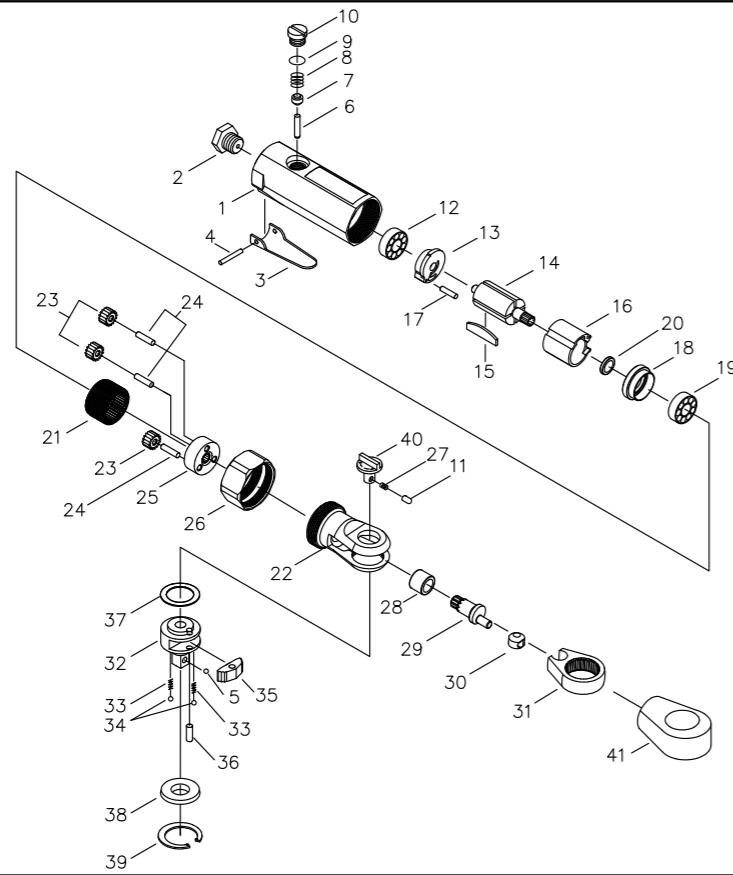


1/4" DR. RATCHET WRENCH



NO.37235-030
37235-031
37335-030
37335-031



INDEX NO.	KT No.	DESCRIPTION	REQ'D NO.	INDEX NO.	KT No.	DESCRIPTION	REQ'D NO.
1	037235-A01	Housing	1	22	037235-A22	Ratchet housing	1
2	033A12-A12	Air Inlet (For 19 BSPT)	1	23	037235-A23	Idler Gear	3
2A	033A12-A12A	Air Inlet (For 18 NPT)	1	24	037235-A24	Idler Gear Pin	3
3	037235-A03	Throttle Level	1	25	037235-A25	Idler Gear Plate	1
4	037235-A04	Roll Pin	1	26	037235-A26	Clamp Nut	1
5	037235-A05	Steel Ball	1	27	037235-A27	Spring	1
6	037235-A06	Valve Pin	1	28	037235-A28	Needle Bearing	1
7	037235-A07	Valve	1	29	037235-A29	Crank Shaft	1
8	037235-A08	Spring	1	30	037235-A30	Drive Bushing	1
9	033A12-A03	O-Ring	1	31	037235-A31	Ratchet Yoke	1
10	037235-A10	Valve Plug	1	32	037235-A32	Ratchet Anvil	1
11	037235-A11	Lock Pin	1	33	037235-A33	Spring	2
12	033A22-A10	Rear Bearing	1	34	037235-A34	Steel Ball	2
13	037235-A13	Rear Plate	1	35	037235-A35	Pawl	1
14	037235-A14	Rotor	1	36	037235-A36	Pin	1
15	033A22-A16	Rotor Blade	4	37	037235-A37	Washer	1
16	033A22-A14	Cylinder	1	38	037235-A38	Thrust Washer	1
17	037235-A17	Cylinder Pin	1	39	037235-A39	Retainer Ring	1
18	037235-A18	Front Plate	1	40	037235-A40	Reverse Button	1
19	037235-A19	Front Bearing	1	41	037235-A41	Boot	1
20	033A22-A13	Bearing Spacer	1				
21	037235-A21	Thread Ring Gear	1	TK-01	037235-ATK1	Ratchet Anvil Assembly (incl. 5.11.27.32.33(2).34(2).35.36.38.40)	

20170206R1

Air Pressure : 6.2 Bar (90 PSI)

Inspec. Item No.	Square drive		Std. Bolt Size		Free Speed		MAX. Torque		Overall Length		Air Inlet		Air Hose		Avg. Air Consumption		Net Weight		Sound Pressure Level A-weighted	Sound Power Level A-weighted	Vib. M/S2
	inch	inch	mm	R.P.M	ft-lb	N.m	inch	mm	BSPT/NPT	ID	cfm	l/min	lbs	kgs	db	W	db	M/S2			
37235-030	1/4"	1/4"	M6	230	30	41	6-1/8"	155	1/4" BSPT	3/8"	71.0	2.5	1.08	0.49	92.00	92.00	10.5				
37235-031	1/4"	1/4"	M6	230	30	41	6-1/8"	155	1/4" NPT	3/8"	71.0	2.5	1.08	0.49	92.00	92.00	10.5				