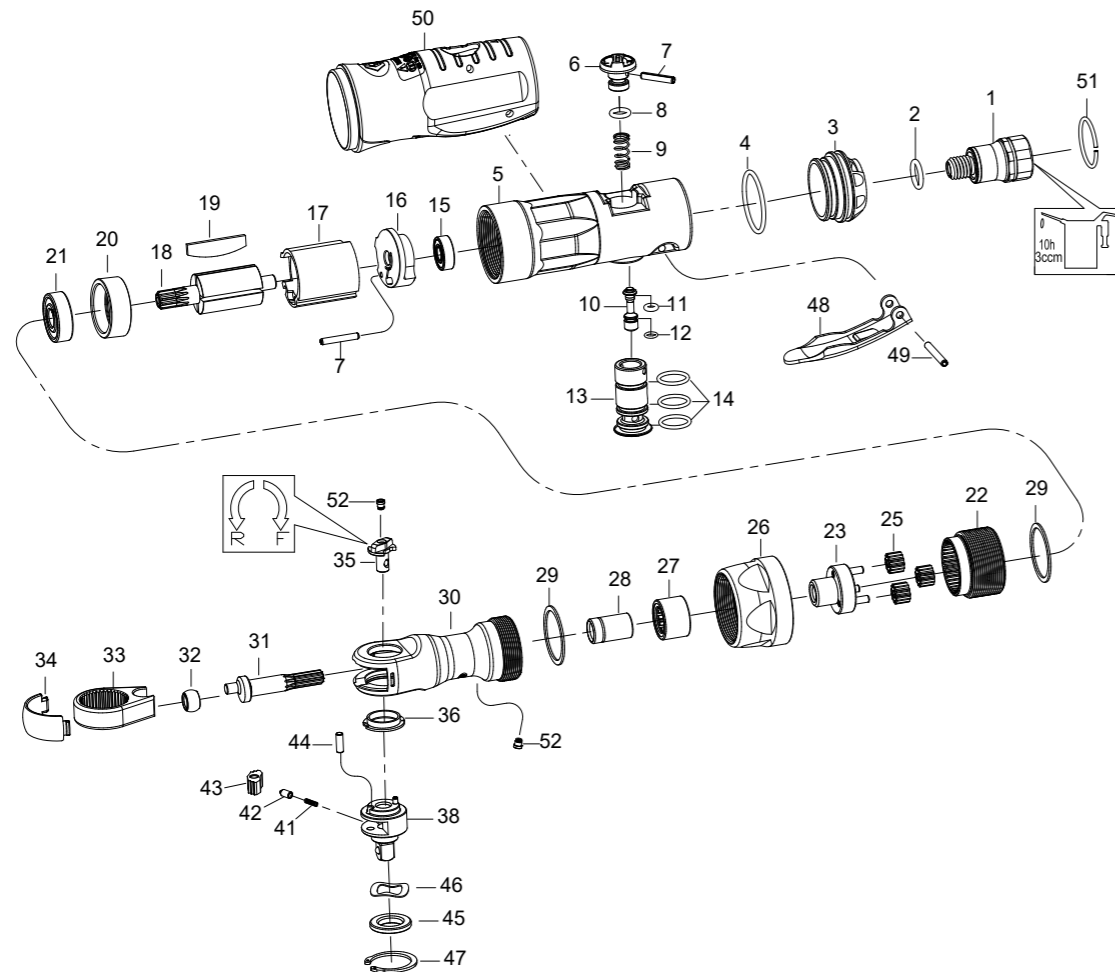


# 1/4" DR. RATCHET WRENCH



NO.37221-030  
37221-031



INDEX NO.	KT No.	DESCRIPTION	REQ'D NO.	INDEX NO.	KT No.	DESCRIPTION	REQ'D NO.
1	037221-A01	Air Inlet ( for 19 BSPT )	1	27	037221-A27	Needle Bearing	1
1A	037221-A01A	Air Inlet ( for 18 NPT )	1	28	037221-A28	Bushing	1
2	037221-A02	O-Ring	1	29	037221-A29	Spacer	2
3	037221-A03	Exhaust Deflector	1	★30	037221-A30	Ratchet Housing Assembly ( incl. 52 )	1
4	037221-A04	O-Ring	1	31	037221-A31	Crank shaft	1
5	037221-A05	Motor Housing	1	32	037221-A32	Drive Bushing	1
6	037221-A06	Air Regulator	1	33	037221-A33	Ratchet Yoke	1
7	037221-A07	Pin	2	34	037221-A34	Ratchet Housing Cover	1
8	037221-A08	O-Ring	1	★35	037221-A35	Reverse Knob Assembly ( incl. 52 )	1
9	037221-A09	Spring	1	36	037221-A36	Thrust Washer	1
10	037221-A10	Throttle Valve Plunger	1	38	037221-A38	Ratchet Anvil Assembly	1
11	037221-A11	O-Ring	1	41	037221-A41	Ratchet Spring	1
12	037221-A12	O-Ring	1	42	037221-A42	Ratchet Lock Pin	1
13	037221-A13	Power Regulator	1	43	037221-A43	Ratchet Pawl	1
14	037221-A14	O-Ring	3	44	037221-A44	Pawl Retaining Pin	1
15	037221-A15	Bearing	1	45	037221-A45	Thrust Washer	1
16	037221-A16	End Plate	1	46	037221-A46	Wave Washer	1
17	037221-A17	Cylinder	1	47	037221-A47	Retaining Ring	1
18	037221-A18	Rotor	1	48	037221-A48	Trigger	1
19	037221-A19	Rotor Blade	4	49	033851-B14	Pin	1
20	037221-A20	End Plate	1	50	037221-A50	Rubber Grip	1
21	037221-A21	Bearing	1	51	037221-A51	Retainer	1
22	037221-A22	Ring Gear	1	●52	037221-A52	Grease Fitting	2
23	037221-A23	Work Spindle Assembly	1	TK-01	037221-ATK1	Ratchet Anvil Assembly ( incl. 35.38.41.42.43.44.52 )	1
25	037221-A25	Planet Gear	3				
26	037221-A26	Coupling Nut	1	TK	037221-ATK	Tune-Up Kit ( incl. 2.4.8.9.11.12.14 ( 3 ) )	1

★ Must be purchased in assembly set

● Recommended not to be purchased alone due to assembly difficulty

20131206R3

Air Pressure : 6.2 Bar (90 PSI)

Inspec. Item No.	Square drive		Std. Bolt Size		Free Speed		MAX. Torque		Overall Length		Air Inlet		Air Hose		Avg. Air Consumption		Net Weight		Sound Pressure Level A-weighted		Sound Power Level A-weighted		Sound Pressure Valve Peak C-weighted		Vib. M/S <sup>2</sup>		
	inch	mm	inch	mm	R.P.M	ft-lb	N.m	inch	mm	BSPT/NPT	ID	cfm	l/min	lbs	kgs	dB(A)	W	dB(C)	mm/s	mm/s	mm/s	mm/s	mm/s	mm/s	mm/s	mm/s	
37221-030	1/4	6.35	M6	15.88	250	30	41	8-1/16	205	1/4" BSPT	3/8	2.8	79	1.48	0.67	86.00	97.00	88.00	2.32	2.32	2.32	2.32	2.32	2.32	2.32	2.32	2.32
37221-031	1/4	6.35	M6	15.88	250	30	41	8-1/16	205	1/4" NPT	3/8	2.8	79	1.48	0.67	86.00	97.00	88.00	2.32	2.32	2.32	2.32	2.32	2.32	2.32	2.32	2.32

http : //www.kingtony.com 8937221030-KT 192x288mm



**KING TONY TOOLS CO., LTD.**  
No. 11, Alley 150, Lane 516, Sec. 2, Hsi Nan Rd.,  
Wu-Jih Dist., Taichung City, Taiwan  
Tel : 886-4-2335-3567 Fax : 886-4-2335-3642

**EC DECLARATION OF CONFORMITY  
FOR NON-ANNEX IV MACHINERY  
IN ACCORDANCE WITH  
MACHINERY SAFETY DIRECTIVES**

2006 / 42 / EC

## IMPACT WRENCH OPERATOR'S INSTRUCTION

This impact wrench has the CE approval

WE, **KING TONY TOOLS CO., LTD.** HEREBY CERTIFY THAT THE MACHINERY DESCRIBED BELOW CONFORMS WITH THE ESSENTIAL HEALTH AND SAFETY REQUIREMENTS OF MACHINERY SAFETY DIRECTIVES 2006/42/EC ON THE APPROXIMATION OF THE LAWS OF THE MEMBER STATES RELATING TO THE SAFETY OF MACHINERY,

### IMPACT WRENCH

37221-030

AND COMPLY WITH THE PROVISIONS SET OUT IN THE FOLLOWING EUROPEAN STANDARD:

ISO 12100:2010 (RISK ASSESSMENT & RISK REDUCTION)

ISO 11148-6:2012 (SAFETY REQUIREMENTS)

ISO 15744:2002 (NOISE LEVEL)

ISO 28927-2:2009 (VIBRATION LEVEL)



DATE OF ISSUE: 7<sup>th</sup> January 2014

NAME: Lin Hsien-Wen

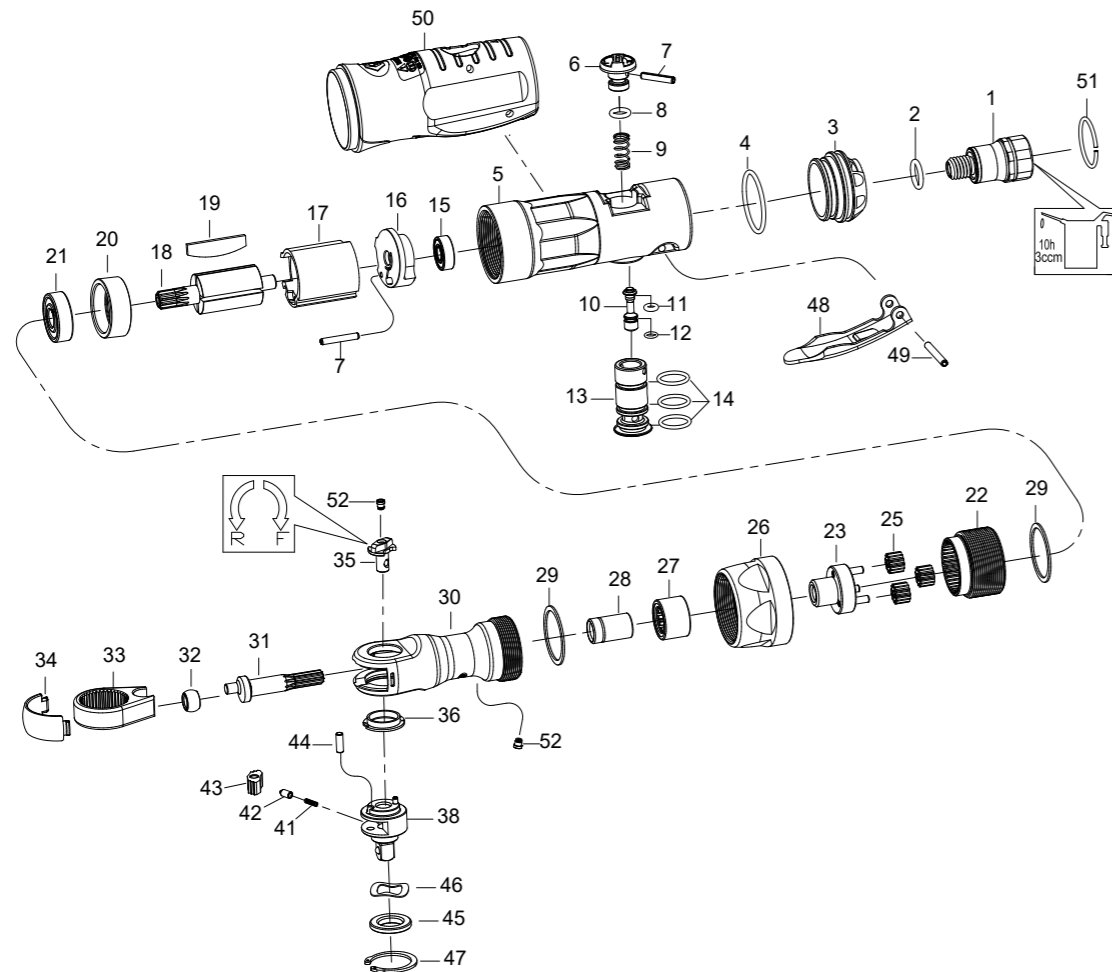
POSITION/TITLE: General manager

SIGNATURE: *Lin Hsien-Wen*

# 1/4" DR. RATCHET WRENCH



NO.37221-030  
37221-031



INDEX NO.	KT No.	DESCRIPTION	REQ'D NO.	INDEX NO.	KT No.	DESCRIPTION	REQ'D NO.
1	037221-A01	Air Inlet ( for 19 BSPT )	1	27	037221-A27	Needle Bearing	1
1A	037221-A01A	Air Inlet ( for 18 NPT )	1	28	037221-A28	Bushing	1
2	037221-A02	O-Ring	1	29	037221-A29	Spacer	2
3	037221-A03	Exhaust Deflector	1	★30	037221-A30	Ratchet Housing Assembly ( incl. 52 )	1
4	037221-A04	O-Ring	1	31	037221-A31	Crank shaft	1
5	037221-A05	Motor Housing	1	32	037221-A32	Drive Bushing	1
6	037221-A06	Air Regulator	1	33	037221-A33	Ratchet Yoke	1
7	037221-A07	Pin	2	34	037221-A34	Ratchet Housing Cover	1
8	037221-A08	O-Ring	1	★35	037221-A35	Reverse Knob Assembly ( incl. 52 )	1
9	037221-A09	Spring	1	36	037221-A36	Thrust Washer	1
10	037221-A10	Throttle Valve Plunger	1	38	037221-A38	Ratchet Anvil Assembly	1
11	037221-A11	O-Ring	1	41	037221-A41	Ratchet Spring	1
12	037221-A12	O-Ring	1	42	037221-A42	Ratchet Lock Pin	1
13	037221-A13	Power Regulator	1	43	037221-A43	Ratchet Pawl	1
14	037221-A14	O-Ring	3	44	037221-A44	Pawl Retaining Pin	1
15	037221-A15	Bearing	1	45	037221-A45	Thrust Washer	1
16	037221-A16	End Plate	1	46	037221-A46	Wave Washer	1
17	037221-A17	Cylinder	1	47	037221-A47	Retaining Ring	1
18	037221-A18	Rotor	1	48	037221-A48	Trigger	1
19	037221-A19	Rotor Blade	4	49	033851-B14	Pin	1
20	037221-A20	End Plate	1	50	037221-A50	Rubber Grip	1
21	037221-A21	Bearing	1	51	037221-A51	Retainer	1
22	037221-A22	Ring Gear	1	●52	037221-A52	Grease Fitting	2
23	037221-A23	Work Spindle Assembly	1	TK-01	037221-ATK1	Ratchet Anvil Assembly ( incl. 35.38.41.42.43.44.52 )	1
25	037221-A25	Planet Gear	3				
26	037221-A26	Coupling Nut	1	TK	037221-ATK	Tune-Up Kit ( incl. 2.4.8.9.11.12.14 ( 3 ) )	1

★ Must be purchased in assembly set

● Recommended not to be purchased alone due to assembly difficulty

20131206R3

Air Pressure : 6.2 Bar (90 PSI)

Inspec. Item No.	Square drive		Std. Bolt Size		Free Speed		MAX. Torque		Overall Length		Air Inlet		Air Hose		Avg. Air Consumption		Net Weight		Sound Pressure Level A-weighted		Sound Power Level A-weighted		Sound Pressure Valve Peak C-weighted		Vib. M/S <sup>2</sup>	
	inch	mm	inch	mm	R.P.M	ft-lb	N.m	inch	mm	BSPT/NPT	ID	cfm	l/min	lbs	kgs	dB(A)	W	dB(C)	mm/s	mm/s	mm/s	mm/s	mm/s	mm/s		
37221-030	1/4	6.35	M6	15.88	250	30	41	8-1/16	205	1/4" BSPT	3/8	2.8	79	1.48	0.67	86.00	97.00	88.00	2.32							
37221-031	1/4	6.35	M6	15.88	250	30	41	8-1/16	205	1/4" NPT	3/8	2.8	79	1.48	0.67	86.00	97.00	88.00	2.32							

http : //www.kingtony.com

8937221030-KT

192x288mm



## KING TONY TOOLS CO., LTD.

No. 11, Alley 150, Lane 516, Sec. 2, Hsi Nan Rd.,  
Wu-Jih Dist., Taichung City, Taiwan  
Tel : 886-4-2335-3567 Fax : 886-4-2335-3642

EC DECLARATION OF CONFORMITY  
FOR NON-ANNEX IV MACHINERY  
IN ACCORDANCE WITH  
MACHINERY SAFETY DIRECTIVES

2006 / 42 / EC

## IMPACT WRENCH OPERATOR'S INSTRUCTION

This impact wrench has the CE approval

WE, KING TONY TOOLS CO., LTD. HEREBY CERTIFY THAT THE MACHINERY DESCRIBED BELOW CONFORMS WITH THE ESSENTIAL HEALTH AND SAFETY REQUIREMENTS OF MACHINERY SAFETY DIRECTIVES 2006/42/EC ON THE APPROXIMATION OF THE LAWS OF THE MEMBER STATES RELATING TO THE SAFETY OF MACHINERY,

### IMPACT WRENCH

37221-031

AND COMPLY WITH THE PROVISIONS SET OUT IN THE FOLLOWING EUROPEAN STANDARD:

ISO 12100:2010 (RISK ASSESSMENT & RISK REDUCTION)

ISO 11148-6:2012 (SAFETY REQUIREMENTS)

ISO 15744:2002 (NOISE LEVEL)

ISO 28927-2:2009 (VIBRATION LEVEL)



DATE OF ISSUE: 7<sup>th</sup> January 2014

NAME: Lin Hsien-Wen

POSITION/TITLE: General manager

SIGNATURE: *Lin Hsien-Wen*