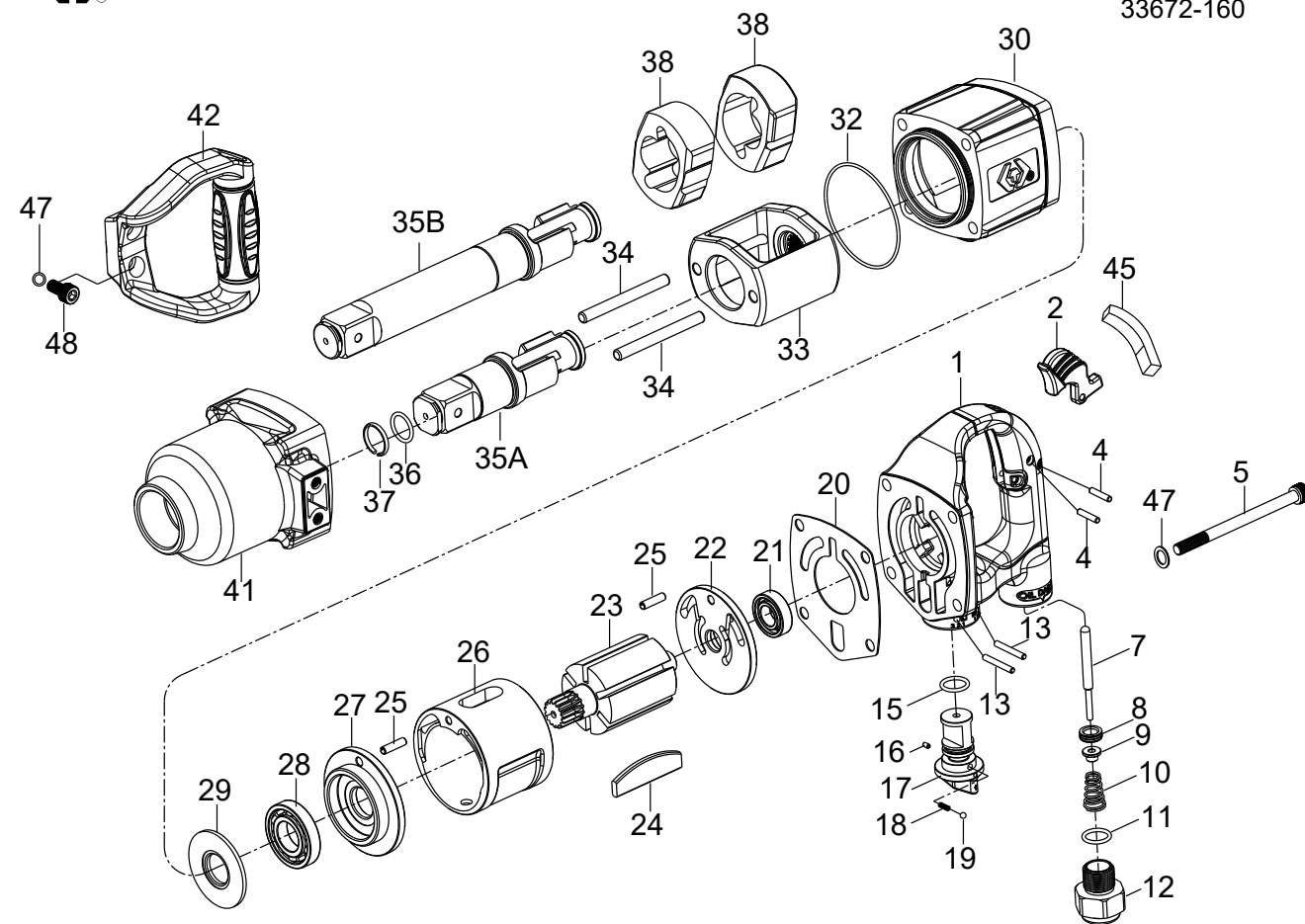


# 3/4" DR. IMPACT WRENCH



NO.33671-160  
33672-160



INDEX NO.	KT No.	DESCRIPTION	REQ'D NO.	INDEX NO.	KT No.	DESCRIPTION	REQ'D NO.
★ 1	033671-A01	Backhead Assembly ( incl. 8 )	1	27	033671-A27	End Plate	1
2	033861-A02	Trigger	1	28	033631-C27	Bearing	1
4	033421-A09	Pin	2	29	033631-C35	Washer	1
5	033861-A05	Screw	4	30	033671-A30	Housing	1
7	033861-A07	Throttle Valve Plunger	1	32	033671-A32	O-Ring	1
● 8	033812-A02A	Throttle Valve Seat	1	33	033671-A33	Hammer Frame	1
9	033812-A04	Throttle Valve	1	34	033671-A34	Hammer Pin	2
10	033812-A05	Spring	1	35A	033671-A35A	Standard Anvil ( for 33671-160 )	1
11	033812-A06	O-Ring	1	35B	033671-A35B	6" Extended Anvil ( for 33672-160 )	1
12	033812-A10B	Air Inlet	1	36	033611-A45	O-Ring	1
13	033812-A14	Pin	2	37	033611-A44	Socket Retainer	1
15	033812-A06	O-Ring	1	38	033671-A38	Hammer	2
16	033812-A20	Pin	1	41	033671-A41	Hammer Case Assembly	1
17	033812-A17	Reverse Valve	1	42	033861-A42	Side Spade Handle	1
18	033411-A14	Spring	1	45	033861-A45	Rubber Cap	1
19	033812-A18	Steel Ball	1	47	033812-A44A	Washer	6
20	033671-A20	Gasket	1	48	033861-A48	Screw	2
● 21	033411-B24	Bearing	1	TK-01	033671-ATK1	End Plate Assembly ( incl. 22.25 )	
★ 22	033671-A22	End Plate Assembly ( incl. 21 )	1	TK-02	033671-ATK2	End Plate Assembly ( incl. 25.27.28 )	
23	033671-A23	Rotor	1	TK-03	033671-ATK3	Standard Anvil Assembly ( incl. 35A.36.37 )	
24	033671-A24	Rotor Blade	6	TK-04	033671-ATK4	6" Extended Anvil Assembly ( incl. 35B.36.37 )	
25	033861-A25	Pin	2	TK	033671-ATK	Tune-Up Kit ( incl. 10.11.15.18.19.20.24 ( 6 ) .32.36.37 )	
26	033671-A26	Cylinder	1				

★ Must be purchased in assembly set

● Recommended not to be purchased alone due to assembly difficulty

20140124R2

Inspec. Item No.	Square drive inch	Std. Bolt Size		Free Speed RPM	MAX. Torque		Overall Length		Air Inlet BSP/NPT	Air Hose ID	Avg. Air Consumption		Net Weight		Sound Pressure Level A-weighted	Sound Power Level A-weighted	Sound Pressure Valve Peak C-weighted	Vib. M/S <sup>2</sup>
		inch	mm		ft-lb	N.m	inch	mm			cfm	l/min	lbs	kgs				
33671-160	3/4	1-3/16	M30	5500	1600	2170	12-1/2	318	1/2" BSP/T	3/4	8.5	241	12.57	5.70	105.00	116.00	122.00	15.40
33672-160	3/4	1-3/16	M30	5500	1600	2170	18-19/64	465	1/2" BSP/T	3/4	8.5	241	14.11	6.40	106.00	117.00	121.00	13.80

http : //www.kingtony.com 8933671160-KT 192x288mm



**KING TONY TOOLS CO., LTD.**  
No. 11, Alley 150, Lane 516, Sec. 2, Hsi Nan Rd.,  
Wu-Jih Dist., Taichung City, Taiwan  
Tel : 886-4-2335-3567 Fax : 886-4-2335-3642

**EC DECLARATION OF CONFORMITY  
FOR NON-ANNEX IV MACHINERY  
IN ACCORDANCE WITH  
MACHINERY SAFETY DIRECTIVES**

2006 / 42 / EC

## IMPACT WRENCH OPERATOR'S INSTRUCTION

This impact wrench has the CE approval

WE, **KING TONY TOOLS CO., LTD.** HEREBY CERTIFY THAT THE MACHINERY DESCRIBED BELOW CONFORMS WITH THE ESSENTIAL HEALTH AND SAFETY REQUIREMENTS OF MACHINERY SAFETY DIRECTIVES 2006/42/EC ON THE APPROXIMATION OF THE LAWS OF THE MEMBER STATES RELATING TO THE SAFETY OF MACHINERY,

### IMPACT WRENCH

**33672-160**

AND COMPLY WITH THE PROVISIONS SET OUT IN THE FOLLOWING EUROPEAN STANDARD:

ISO 12100:2010 (RISK ASSESSMENT & RISK REDUCTION)

ISO 11148-6:2012 (SAFETY REQUIREMENTS)

ISO 15744:2002 (NOISE LEVEL)

ISO 28927-2:2009 (VIBRATION LEVEL)

DATE OF ISSUE: 7<sup>th</sup> January 2014

NAME: Lin Hsien-Wen

POSITION/TITLE: General manager

SIGNATURE: *Lin Hsien-Wen*

