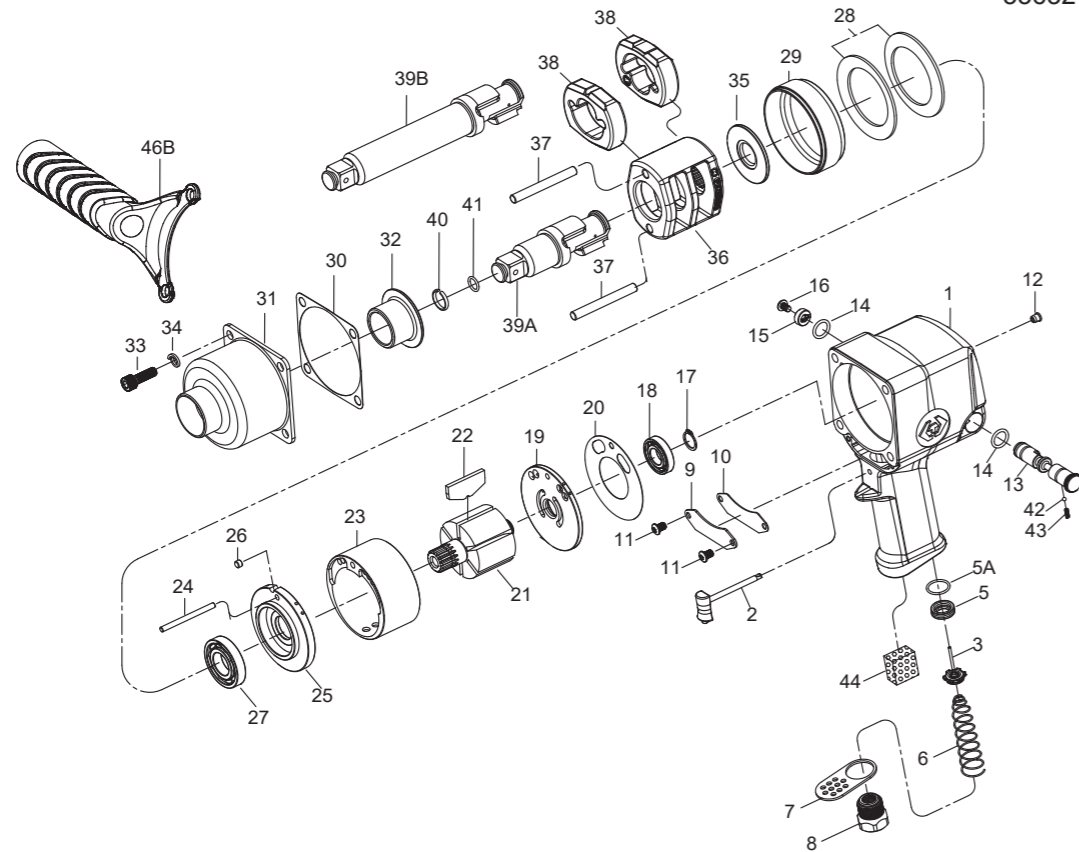


# 3/4" DR. AIR IMPACT WRENCH



NO.33631-110  
33631-111  
33632-110  
33632-111



INDEX No.	KT No.	DESCRIPTION	REQ'D No.	INDEX No.	KT No.	DESCRIPTION	REQ'D No.
★ 1	33631-C01	Housing assembly ( incl. 5.5A.12 )	1	26	33631-C26	Pin	1
★ 2	33631-C02	Trigger assembly	1	• 27	33631-C27	Bearing	1
3	33631-C03	Throttle valve assembly	1	28	33631-C28	Motor clamp washer	2
5	33631-C05	Throttle valve seat	1	29	33631-C29	Separator	1
5A	33851-A05A	O-ring	1	30	33631-C30	Gasket	1
6	33631-C06	Spring	1	31	33631-C31	Hammer case	1
7	33631-C07	Exhaust deflector	1	32	33631-C32	Bushing	1
8	33631-C08	Air inlet ( 19 BSPT )	1	33	33631-C33	Screw	4
8A	33631-C08A	Air inlet ( 18 NPT )	1	34	33812-A44A	Washer	4
9	33631-C09	Housing plate	1	35	33631-C35	Washer	1
10	33631-C10	Gasket	1	36	33631-C36	Hammer frame	1
11	33621-B41	Screw	2	37	33631-C37	Hammer pin	2
• 12	33411-A07	Grease fitting	1	38	33631-C38	Hammer	2
13	33631-C13	Reverse valve	1	• 39A	33631-C39A	Standard anvil ( for 33631-110 )	1
14	33631-C14	O-ring	2	• 39B	33631-C39B	6" Extended anvil ( for 33632-110 )	1
15	33411-A15	Reverse valve knob	1	40	33611-A44	Socket retainer	1
16	33411-A16	Screw	1	41	33611-A45	O-ring	1
17	33631-C17	Retainer	1	42	33411-A13	Steel ball	1
• 18	33631-C18	Bearing	1	43	33411-A14	Spring	1
★ 19	33631-C19	End plate assembly ( incl. 18 )	1	44	33621-B43	Muffler element	1
20	33631-C20	Gasket	1	46B	33631-C46B	Handle ( select )	1
21	33631-C21	Rotor	1	TK-03	33631-CTK3	Standard anvil assembly( incl. 39A.40.41 )	
22	33631-C22	Rotor blade	6	TK-04	33631-CTK4	6" Extended anvil assembly( incl. 39B.40.41 )	
23	33631-C23	Cylinder	1	TK-05	33631-CTK5	Hammer case assembly( incl. 31.32 )	
24	33631-C24	Cylinder dowel	1	TK	33631-CTK	Tune-up kit ( incl. 6.14 ( 2 ) .17.20.22 ( 6 ) 26.30.40.41.42.43 )	
★ 25	33631-C25	End plate assembly ( incl. 27 )	1				

★ Must be purchased in assembly set

• Recommended not to be purchased alone due to assembly difficulty

20231130R3

Air pressure : 6.2 Bar (90 p.s.i)

Inspec. Item No.	Square drive		Std. bolt size		Free speed		Max. torque		Overall length		Air inlet		Air hose		Avg. air consumption		Net weight		Sound pressure level a-weighted	Sound power level a-weighted	Sound pressure valve peak c-weighted	Vib. M/S2
	inch	mm	inch	mm	R.P.M	Ft-lbs	N.m	inch	mm	BSPT/NPT	ID	cfm	L/min	lbs	kgs							
33631-110	3/4"	19.05	1-3/16"	M30	5500	1100	1491	8-43/64"	220	3/8" BSPT	1/2"	9.5	269	12.35	5.60	98.35	109.35	99.00	5.31			
33631-111	3/4"	19.05	1-3/16"	M30	5500	1100	1491	8-43/64"	220	3/8" NPT	1/2"	9.5	269	12.35	5.60	98.35	109.35	99.00	5.31			
33632-110	3/4"	19.05	1-3/16"	M30	5500	1100	1491	14-55/64"	377	3/8" BSPT	1/2"	9.5	269	13.32	6.04	97.20	108.19	97.80	7.90			
33632-111	3/4"	19.05	1-3/16"	M30	5500	1100	1491	14-55/64"	377	3/8" NPT	1/2"	9.5	269	13.32	6.04	97.20	108.19	97.80	7.90			

http://www.kingtony.com

8933631110-KT

192x288mm



**KING TONY TOOLS CO., LTD.**  
No. 11, Alley 150, Lane 516, Sec. 2, Hsi Nan Rd.,  
Wu-Jih Dist., Taichung City, Taiwan  
Tel : 886-4-2335-3567 Fax : 886-4-2335-3642

**EC DECLARATION OF CONFORMITY  
FOR NON-ANNEX IV MACHINERY  
IN ACCORDANCE WITH  
MACHINERY SAFETY DIRECTIVES  
2006 / 42/ EC**

## AIR IMPACT WRENCH OPERATOR'S INSTRUCTION

This air impact wrench has the CE approval

WE, **KING TONY TOOLS CO., LTD.** HEREBY CERTIFY THAT THE MACHINERY DESCRIBED BELOW CONFORMS WITH THE ESSENTIAL HEALTH AND SAFETY REQUIREMENTS OF MACHINERY SAFETY DIRECTIVES 2006/42/EC ON THE APPROXIMATION OF THE LAWS OF THE MEMBER STATES RELATING TO THE SAFETY OF MACHINERY,

### AIR IMPACT WRENCH

**33631-110**  
**33631-111**  
**33632-110**  
**33632-111**

AND COMPLY WITH THE PROVISIONS SET OUT IN THE FOLLOWING EUROPEAN STANDARD:

ISO 12100:2010 (RISK ASSESSMENT & RISK REDUCTION)

ISO 11148-6:2012 (SAFETY REQUIREMENTS)

ISO 15744:2002 (NOISE LEVEL)

ISO 28927-2:2009 (VIBRATION LEVEL)

DATE OF ISSUE: 7<sup>th</sup> January 2014

NAME: Lin Hsien-Wen

POSITION/TITLE: General manager

SIGNATURE: *Lin Hsien-Wen*

