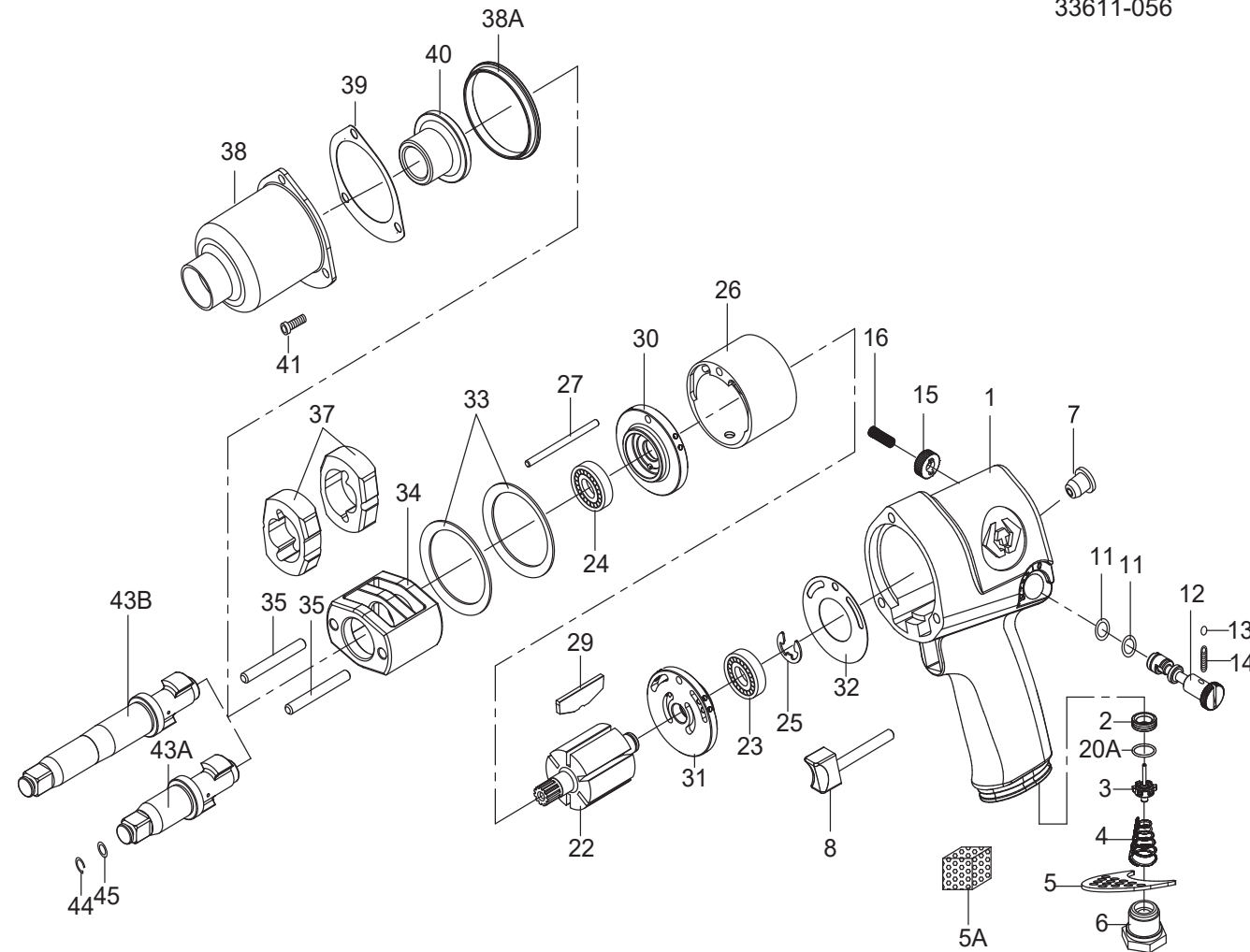


# 3/4" DR. AIR IMPACT WRENCH



NO.33611-055  
33611-056



INDEX No.	KT No.	DESCRIPTION	REQ'D No.	INDEX No.	KT No.	DESCRIPTION	REQ'D No.
★ 1	33411-B01	Motor housing assembly ( incl. 2.7.20a )	1	27	33411-B27	Cylinder dowel	1
2	33411-A02	Throttle valve seat	1	29	33411-B29	Rotor blade	6
3	33411-A03	Throttle valve assembly	1	30	33411-B30	Front end plate	1
4	33411-A04	Spring	1	31	33411-B31	Rear end plate	1
5	33411-A05	Exhaust deflector	1	32	33411-A32	Gasket	1
5A	33621-B43	Muffler element	1	33	33411-A33	Motor clamp washer	2
6	33411-A06	Air inlet ( 19 BSPT )	1	34	33611-A34	Hammer frame	1
6A	33411-A06A	Air inlet ( 18 NPT )	1	35	33411-A35	Hammer pin	2
7	33411-A07	Grease fitting	1	37	33411-A37	Hammer	2
★ 8	33411-A08	Trigger assembly	1	38	33411-A38	Hammer case	1
● 11	33411-B11	O-ring	2	38A	33411-A38A	Hammer case pilot	1
12	33411-A12	Reverse valve	1	39	33411-A39	Gasket	1
13	33411-A13	Steel ball	1	40	33611-A38A	Bushing	1
14	33411-A14	Spring	1	41	33411-A41	Screw	3
15	33411-A15	Reverse valve knob	1	● 43A	33611-A43A	Standard anvil ( for 33611-055 )	1
16	33411-A16	Screw	1	● 43B	33611-A43B	2" Extended anvil ( for 33612-055 )	1
20A	33411-A20A	O-ring	1	44	33611-A44	Socket retainer	1
22	33411-B22	Rotor	1	45	33611-A45	O-ring	1
23	33411-A23	Bearing	1	TK-03	33611-ATK3	Standard anvil assembly ( incl. 43A.44.45 )	
24	33411-B24	Bearing	1	TK-04	33611-ATK4	2" Extended anvil assembly ( incl. 43B.44.45 )	
25	33411-A25	Retainer	1	TK-05	33611-ATK5	Hammer case assembly ( incl. 38.40 )	
26	33411-B26	Cylinder	1	TK	33611-ATK	Tune-up kit ( incl. 3.4.11 ( 2 ) .25.29 ( 6 ) .32.39.44.45 )	

★ Must be purchased in assembly set  
● Recommended not to be purchased alone due to assembly difficulty

Air pressure : 6.2 Bar (90 p.s.i)

Inspec. Item No.	Square drive		Std. bolt size		Free speed		Max. torque		Overall length		Air inlet		Air hose		Avg. Air consumption		Net weight		Sound pressure level a-weighted		Sound pressure level c-weighted		Vib. M/S2
	inch	mm	inch	mm	R.P.M	Ft-lbs	N.m	inch	mm	BSPT/NPT	ID	cfm	L/min	lbs	kgs	dB(A)	dB(C)	dB(A)	dB(C)				
33611-055	3/4"	19mm	7/8"	M20	6500	700	949	7-13/32"	188	1/4" BSPT	3/8"	4.4	125	6.61	3.00	96.56	107.55	97.80	8.64				8.64
33611-056	3/4"	19mm	7/8"	M20	6500	700	949	7-13/32"	188	1/4" NPT	3/8"	4.4	125	6.61	3.00	96.56	107.55	97.80	8.64				8.64



**KING TONY TOOLS CO., LTD.**  
No. 11, Alley 150, Lane 516, Sec. 2, Hsi Nan Rd.,  
Wu-Jih Dist., Taichung City, Taiwan  
Tel : 886-4-2335-3567 Fax : 886-4-2335-3642

**EC DECLARATION OF CONFORMITY  
FOR NON-ANNEX IV MACHINERY  
IN ACCORDANCE WITH  
MACHINERY SAFETY DIRECTIVES  
2006 / 42/ EC**

## AIR IMPACT WRENCH OPERATOR'S INSTRUCTION

This air impact wrench has the CE approval

WE, **KING TONY TOOLS CO., LTD.** HEREBY CERTIFY THAT THE MACHINERY DESCRIBED BELOW CONFORMS WITH THE ESSENTIAL HEALTH AND SAFETY REQUIREMENTS OF MACHINERY SAFETY DIRECTIVES 2006/42/EC ON THE APPROXIMATION OF THE LAWS OF THE MEMBER STATES RELATING TO THE SAFETY OF MACHINERY,

### AIR IMPACT WRENCH

**33611-055  
33611-056**

AND COMPLY WITH THE PROVISIONS SET OUT IN THE FOLLOWING EUROPEAN STANDARD:  
ISO 12100:2010 (RISK ASSESSMENT & RISK REDUCTION)  
ISO 11148-6:2012 (SAFETY REQUIREMENTS)  
ISO 15744:2002 (NOISE LEVEL)  
ISO 28927-2:2009 (VIBRATION LEVEL)



DATE OF ISSUE: 7<sup>th</sup> January 2014

NAME: Lin Hsien-Wen

POSITION/TITLE: General manager

SIGNATURE: *Lin Hsien-Wen*