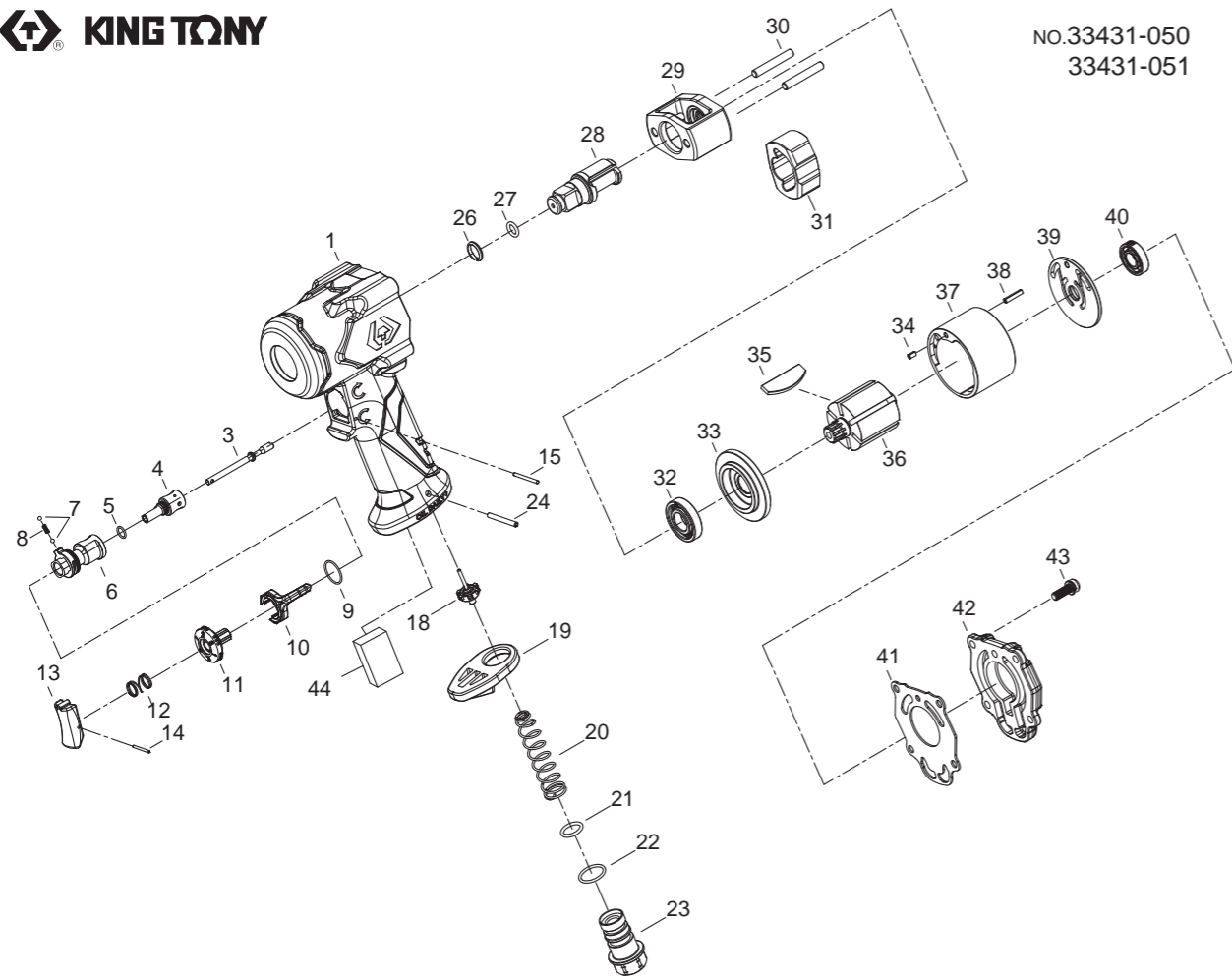


1/2" DR. AIR IMPACT WRENCH



NO.33431-050
33431-051



INDEX No.	KT No.	DESCRIPTION	REQ'D No.	INDEX No.	KT No.	DESCRIPTION	REQ'D No.
01	33431-B01	Motor housing assembly	1	27	37221-A08	O-ring	1
03	33431-B03	Valve stem	1	28	33431-B28	Standard anvil	1
04	33431-B04	Throttle valve	1	29	33431-B29	Hammer frame	1
05	33431-A04	O-ring	1	30	33431-B30	Hammer pin	2
06	33431-B06	Reverse valve	1	31	33431-B31	Hammer	1
07	33311-A10	Steel ball	2	32	33411-A24	Ball bearing	1
08	33431-B08	Spring	1	33	33431-B33	Front end plate	1
09	33431-B09	O-ring	1	34	33812-A20	Spring pin	1
10	33431-A09	Reverse knob	1	35	33431-B35	Rotor blade	6
11	33431-A10	Reverse valve	1	36	33431-B36	Rotor	1
12	33431-A11	Spring	1	37	33431-B37	Cylinder	1
13	33431-B13	Trigger	1	38	33111-A44	Spring pin	1
14	33431-A13	Spring pin	1	39	33431-B39	Rear end plate	1
15	33431-A16	Pin	1	40	33311-A25	Ball bearing	1
18	33411-A03	Throttle valve assembly	1	41	33431-B41	Gasket	1
19	33431-A22	Exhaust deflector	1	42	33431-B42	Backhead	1
20	33311-A04	Spring	1	43	33431-B43	Screw	4
21	37423-A10	O-ring	1	44	33481-A45	Muffler element	1
22	33841-A09	O-ring	1	TK-01	33431-BTK1	Standard anvil assembly (incl.26.27.28)	1
23	33431-A26	Air inlet (19PT)	1	TK-02	33431-BTK2	Front end plate assembly (incl.32.33)	1
23	33431-A26A	Air inlet (18NPT)	1	TK-03	33431-BTK3	Rear end plate assembly (incl.39.40)	1
24	33431-A17	Spring pin	1	TK	33431-BTK	Tune-up kit (incl.05.07 (2). 08.09.12.21.22.26.27.35 (6).41)	
26	33411-A44	Socket retainer	1				

• Recommended not to be purchased alone due to assembly difficulty

20231130R3

Air pressure : 6.2 Bar (90 p.s.i)

Inspec. Item No.	Square drive inch	Type anvil	Free speed		Max. torque		Overall length		Air inlet	Air hose	Air pressure		Avg. air consumption		Net weight	
			R.P.M	Ft-lbs	N.m	inch	mm	BSPT/NPT	ID	bar	PSI	L/min	CFM	lbs	kgs	
33431-050	1/2"	Std.	9000	500	678	4.3"	109	1/4" BSPT	3/8"	6.2	90	142	5.0	2.98	1.35	
33431-051	1/2"	Std.	9000	500	678	4.3"	109	1/4" NPT	3/8"	6.2	90	142	5.0	2.98	1.35	

http://www.kingtony.com

8933431050-KT

192x288mm



KING TONY TOOLS CO., LTD.
No. 11, Alley 150, Lane 516, Sec. 2, Hsi Nan Rd.,
Wu-Jih Dist., Taichung City, Taiwan
Tel : 886-4-2335-3567 Fax : 886-4-2335-3642

**EC DECLARATION OF CONFORMITY
FOR NON-ANNEX IV MACHINERY
IN ACCORDANCE WITH
MACHINERY SAFETY DIRECTIVES**

2006 / 42 / EC

**AIR IMPACT WRENCH
OPERATOR'S INSTRUCTION**

This air impact wrench has the CE approval

WE, KING TONY TOOLS CO., LTD. HEREBY CERTIFY THAT THE MACHINERY DESCRIBED BELOW CONFORMS WITH THE ESSENTIAL HEALTH AND SAFETY REQUIREMENTS OF MACHINERY SAFETY DIRECTIVES 2006/42/EC ON THE APPROXIMATION OF THE LAWS OF THE MEMBER STATES RELATING TO THE SAFETY OF MACHINERY,

AIR IMPACT WRENCH

33431-050

33431-051

AND COMPLY WITH THE PROVISIONS SET OUT IN THE FOLLOWING EUROPEAN STANDARD:

ISO 12100:2010 (RISK ASSESSMENT & RISK REDUCTION)

ISO 11148-6:2012 (SAFETY REQUIREMENTS)

ISO 15744:2002 (NOISE LEVEL)

ISO 28927-2:2009 (VIBRATION LEVEL)



DATE OF ISSUE: 1th July 2018

NAME: Lin Hsien-Wen

POSITION/TITLE: General manager

SIGNATURE: *Lin Hsien-Wen*