

PNEUMATIC HYDRAULIC WORKSHOP PRESS OPERATION MANUAL



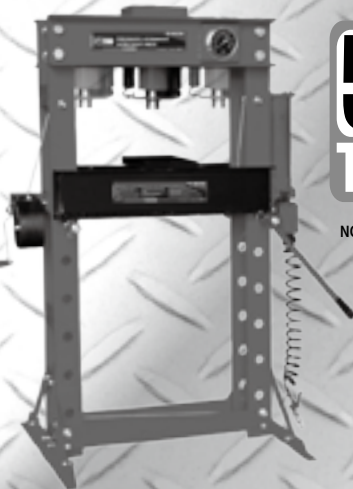
**30
TON**

NO.9TY521-30A-B



**40
TON**

NO.9TY522-40A-B



**50
TON**

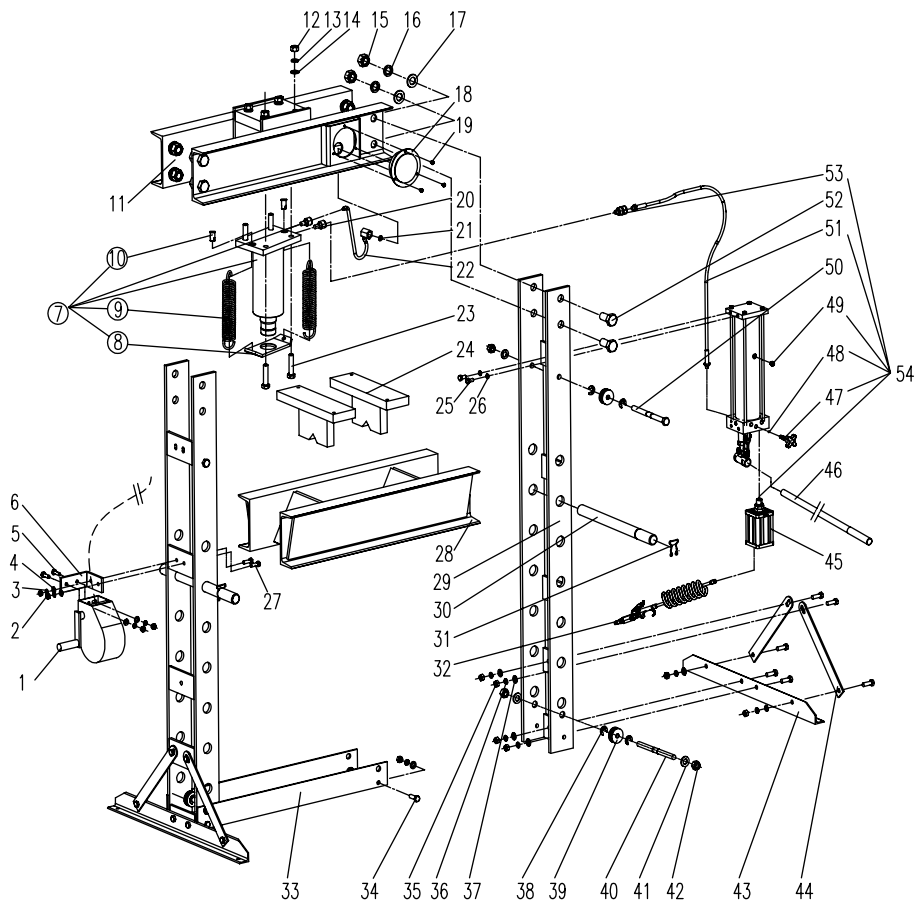
NO.9TY522-50A-B

CE

NO.9TY521
NO.9TY522

Please wear proper safety gear
while working.





PARTS LIST

Part	Description	Qty	Part	Description	Qty	Part	Description	Qty	Part	Description	Qty
1	Take-up	1	15	Nut M24	8	29	Posts	2	43	Base	2
2	Nut M10	4	16	Spring washer M24	8	30	Support pin	2	44	Side support	4
3	Spring washer M10	8	17	Washer Ø24	8	31	Round wire snap ring Ø24mm	2	45	Air pump	1
4	Washer M10	4	18	Gauge(0-85 TON)	1	32	Pneumatic trigger switch	1	46	Handle	1
5	Hex head bolt M10x25mm	2	19	Pan head screw M5x10mm	3	33	Bottom crossbeam	2	47	Release valve assembly	1
6	L-bracket	1	20	Female coupling valve	2	34	Hex head bolt M12x35mm	16	48	Steel ball bearing Ø6mm	1
7	Cylinder assembly	1	21	Rectangular seal	1	35	Nut M12	16	49	Bleed screw	1
8	Spring base plate	1	22	Hose assembly for gauge	1	36	Spring washer Ø12	16	50	Roller shaft M16x192mm	2
9	Return spring	2	23	Hex head bolt M16x75mm	4	37	Washer Ø12	16	51	Connecting pipe	1
10	Spring pin	1	24	Bolster plate	2	38	Split washer Ø15	8	52	Hex head bolt M24x50mm	8
11	Upper bolster	1	25	Hex head bolt M10x20mm	4	39	Wire roller	4	53	Male coupling valve	2
12	Nut M16	4	26	Spring washer Ø10	4	40	Roller shaft M16x202mm	2	54	Power unit assembly	1
13	Spring washer M16	4	27	Hex head bolt M10x30mm	2	41	Washer M16	4			
14	Washer M16	4	28	Lower bolster	1	42	Nut M16	4			



- Before first use , purge away air from the hydraulic system: open the release valve by turning it counterclockwise. Pump several full strokes to eliminate any air in the system.
- Check all parts and conditions, if there is any broken part , please stop using it

KT NO.	Capacity (T)	Stroke (mm)	Work range (mm)	Gauge
9TY521-30A-B	30	160	0-995	•
9TY522-40A-B	40	175	0-890	•
9TY522-50A-B	50	175	0-890	•

OPERATING INSTRUCTIONS

- Place the heel block on bed frame, then insert workpiece onto the heel block.
- Connect the air inlet fitting into the shop air supply hose lock fitting, turn on the valve to let the pump work until serrated saddle nears workpiece, then turn off the air valve. When air source is unavailable, pump the handle until serrated saddle nears workpiece.
- Align workpiece and ram to ensure center-loading.
- Turn on air valve (or pump the handle) to apply load onto workpiece.
- When work is done, turn off the air valve (or stop pumping handle), slowly and carefully remove load from workpiece by turning the release valve counterclockwise in small increments.
- Once ram has fully retracted, remove workpiece from bed frame
- Disconnect the air inlet fitting from the air source.

MAINTENANCE

- Clean the outside of the press with dry, clean and soft cloth and periodically lubricate the joints and all moving parts with a light oil as needed.
- When not in use, store the press in a dry location with ram and piston fully retracted.
- When press efficiency drops, purge always air from hydraulic system as described before.
- Check the hydraulic oil; remove the oil filler nut on the top of the reservoir, if the oil is not adequate, fill with high quality hydraulic jack oil as necessary, then replace the oil filler nut, purge away air from the hydraulic system.

SAFETY INSTRUCTIONS

- If detect anything that may indicate imminent structural failure, stop using the press immediately and inspect it thoroughly.
- Do not use press to compress springs or any other item that could disengage and cause a potential hazard.
- Keep it clean for best and safest performance.
- Do not exceed the rated capacity.
- Use this press for the purpose for which it is intended. Do not use it for any other purpose it is not designed to perform
- Keep children and unauthorized persons away from the work area.
- Remove ill fitting clothing. Remove ties, watches, rings and other loose jewelry and contain long hair.
- Wear ANSI approved impact safety goggles, full-face impact safety shield and heavy-duty work gloves when operating the press.
- Keep proper balance and footing, do not over-reach and wear non-skid footwear
- Only use this press on a surface that is stable, level, dry and not slippery, and capable of sustaining the load.
- Keep the surface clean, tidy and free from unrelated materials and ensure that there is adequate lighting.
- Check to ensure that all applicable bolts and nuts are firmly tightened.
- Do not use the shop press to compress spring or any other item that could disengage and cause a potential hazard. Never stand directly in front of loaded press and never leave loaded press unattended.
- Do not operate the press when you are tired or under the influence of alcohol, drugs or any intoxicating medication.
- Do not allow untrained persons to operate the hydraulic shop press.
- Do not make any modifications to the press.
- Do not expose the press to rain or any other kind of bad weather.
- If the press needs repairing and/or there are any parts that need to be replaced, have it repaired by authorized technicians and only use the replacement parts supplied by the manufacturer.