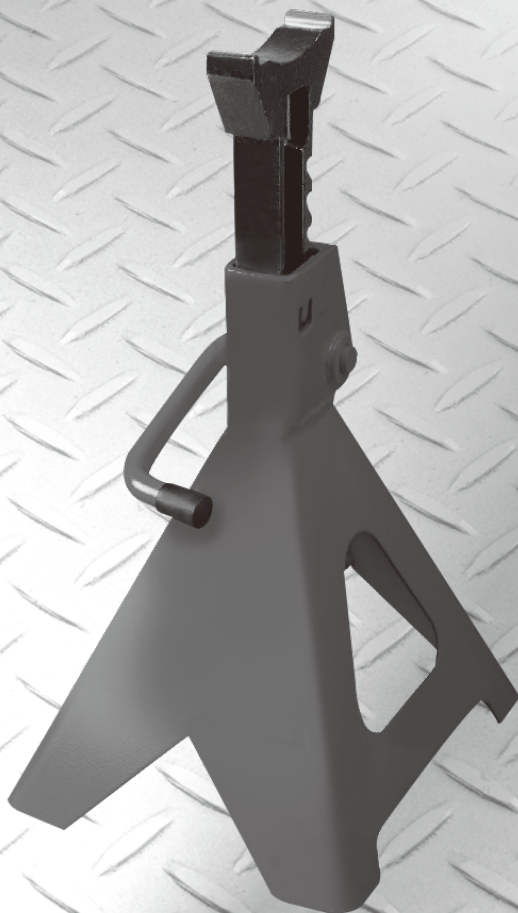




KING TONY

RATCHETING JACK STANDS OPERATION MANUAL

NO.9TY341



WARNING



Please wear proper safety gear while working.

Enjoy your work

KT NO.	Capacity	Lifting range
9TY341-03A-B	3T	285~425mm
9TY341-06A-B	6T	390~605mm
9TY341-12A-B	12T	465~715mm

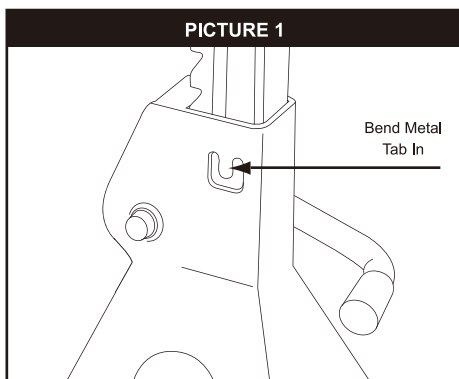
WARNING:

- Read-Study, understand and follow all instructions prior to use, failure to heed his warning may result in personal injury and property damage.

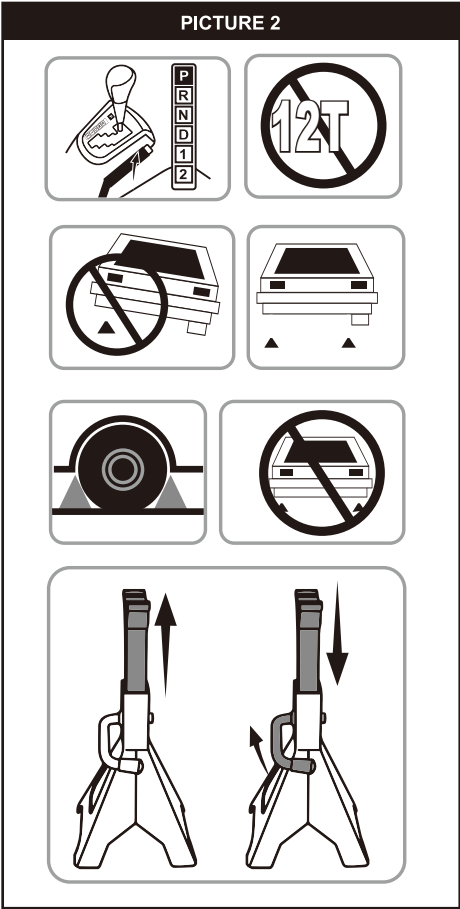
DO NOT OVERLOAD BEYOND RATED CAPACITY.

- Always use jack stands on level, solid ground, Never use on slope, inclined, angle or soft surface. •
- Always use stands in pairs, on the same axle, and at the same height.
- Stands are not to be used to simultaneously support both ends or one side of vehicle.
- Failure to heed these warnings may result in damage to jack and failure resulting in personal injury or property damage. Inspect before each use.
- Support the vehicle only on areas specified by the vehicle manufacturer.
- Make sure the load and stand are stable before getting under the vehicle.
- Center load on saddle.
- Never use any other additional support.
- Some vehicles require an adapter to properly engage the frame for lifting.
- Use vehicle manufacturers instructions on proper lifting.
- No alterations shall be made to this product.
- Only attachments and/or adapters supplied by the manufacturer shall be used.
- If the operator is not fluent in English, the product and safety instructions shall be read to and discussed with the operator in the operator's native language by the purchaser/owner or his designee, making sure that the operator comprehends their contents.
- Inspect before each use **DO NOT USE IF BENT BROKEN OR CRACKED COMPONENT ARE NOTED.** prevent corrosion.
- Clean as needed and wipe with an oily cloth and keep in dry area when not in use.

PICTURE 1



- Visual inspection shall be performed before each use of the stand by checking abnormal condition, such as cracked welds, leaks and damaged, loose, or missing parts if stand is believed to have been subjected to abnormal load or shock inspection shall be made by authorized repair facility.
- Equipment that appears damage or worn or operates abnormally shall be removed from service until repair.
- Repair should be made by authorized repair facility.
- Annual inspection of the stand is recommended and should be made by the manufacturer's or supplier's authorized repair facility to ensure that you stand is optimum conditions and that the stand has correct decals and safety labels specified by the manufacturer.





KING TONY

Enjoy your work

www.kingtony.com
customer service e-mail : service@kingtony.com