



KING TONY

LOW PROFILE HYDRAULIC GARAGE JACK

**2.5
TON**



**NO.9TY133-25A-B
NO.9TY133A-25A-B**



Please wear proper safety gear while working.



KT NO.	Capacity (T)	Min. height (mm)	Max. height (mm)	SPEED REGULATING
9TY133-25A-B	2.5	75	515	NO
9TY133A-25A-B	2.5	75	515	YES

READ ALL INSTRUCTIONS BEFORE USE

- Study, understand, and follow all instructions before operating this device.
- Failure to heed these markings may result in serious personal injury and / or property damage.
- Prior to each use, visual inspection shall be made to the device by checking for abnormal conditions, such as cracked welds, leaks, and damaged, loose, or missing parts.
- Do not exceed the rated capacity stated.
- Use only on hard level surfaces.
- This item is to be used as a lifting device only. Immediately support the vehicle with appropriate rated jack stands after lifting.
- Do not move the vehicle while it is on the jack.
- Lift only on areas of the vehicle as specified by the vehicle manufacturer.
- No alterations shall be made to this product.



LIFTING

- Turn the handle/release valve clockwise to the closed position. Do not over tighten.
- Position the jack under the specified lift point.
- Begin lifting by pumping the handle up and down.
- Immediately support the vehicle with appropriately rated jack stands after lifting.
- Turn the handle/release valve slowly counterclockwise to lower the vehicle onto jack stands.

LOWERING

- Turn the handle/release valve clockwise to the closed position. Do not over tighten.
- Pump the handle up and down to lift vehicle off jack stands.
- Remove the jack stands. Do not get under or let anyone get under the vehicle while lowering.
- Turn the handle/release valve slowly counterclockwise to lower the vehicle onto the ground.

MAINTENANCE

CHECK AND REFILL OIL :

- With the jack in the fully lowered level position, if unit cover is provided, remove unit cover, then remove oil filler plug.
- Proper oil level should be just cover inner cylinder as seen from the oil filler plug hole.
- Do not overfill. Always fill with new, clean hydraulic jack oil as recommended above.
- Reinstall oil filler plug, then reinstall unit cover.

NOTICE : Use high grade hydraulic oil only. Never use brake fluid, motor oil, transmission fluid, turbine oil or any other fluids.

LUBRICATION AND CLEANING

- Periodically clean and lubricate all moving parts and pivot points.

AIR VENTING PROCEDURES

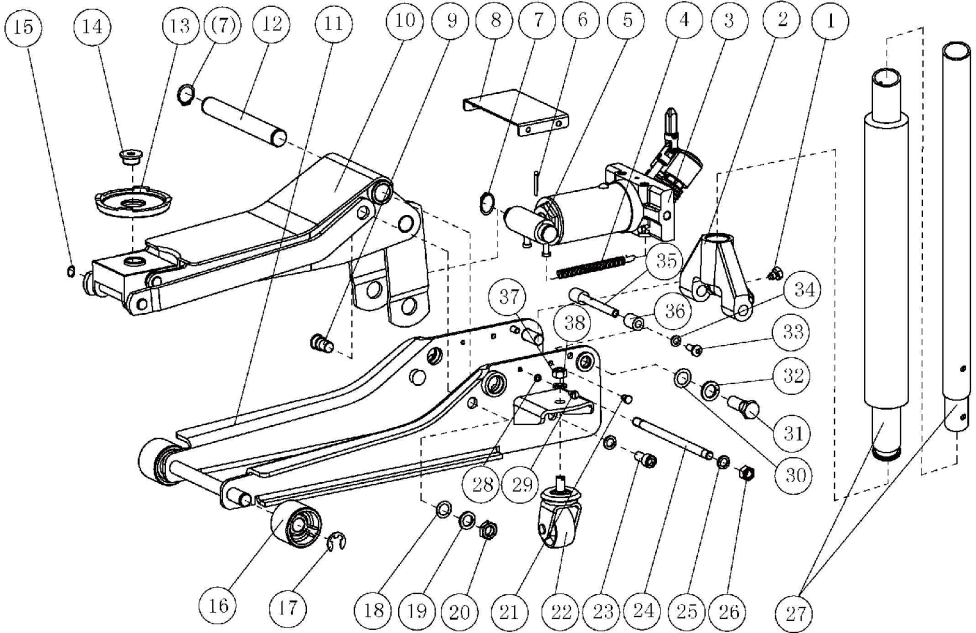
- With the jack in the fully lowered position, unlock release valve, remove oil filler plug.
- Pump the handle rapidly several mins. Reinstall oil filler plug.
- Turn the handle/release valve clockwise to the closed position.
- Pump the handle until the arm reaches maximum height and continue to pump several mins. to remove trapped air in the system.
- Turn the handle/release valve counterclockwise in one full turn and lower arm to the lowest position. Use force on saddle if necessary.
- Carefully and slowly loosen oil filler plug to release pressurized air.
- Repeat above steps until trapped air is completely vented.

INSPECTION

- Visual inspection shall be made before each use of the device by checking for abnormal conditions, such as cracked welds, leaks, and damaged, loose, or missing parts.
- This device shall be inspected immediately if the device is believed to have been subjected to an abnormal load or shock.

TROUBLESHOOTING

Problems	Causes	Solutions
Jack will not lift the load.	<ol style="list-style-type: none">1. Release valve not tightly closed.2. Low oil level.3. Defective or worn internal parts.4. Load exceeds maximum allowance.	<ol style="list-style-type: none">1. Tighten release valve.2. Check and add oil.3. Discontinue use and contact a local repair center.4. Use a higher capacity jack.
Jack will not hold the load.	<ol style="list-style-type: none">1. Release valve not tightly closed.2. Power unit malfunction.	<ol style="list-style-type: none">1. Tighten release valve.2. Discontinue use and contact a local repair center.
Jack will not descend to minimum height, or will not remain in lowered position.	<ol style="list-style-type: none">1. Air trapped in system.2. Reservoir oil overfilled.	<ol style="list-style-type: none">1. Check and ensure proper oil level.2. Vent air out of system. Follow "AIR VENTING PROCEDURES" instructions.
Jack will not lift to max height.	<ol style="list-style-type: none">1. Low oil level.	<ol style="list-style-type: none">1. Check and ensure proper oil level.2. Follow "MAINTENANCE" instructions.
Jack will not function properly after trying solution.	<ol style="list-style-type: none">1. Internal malfunction or structural damage.	<ol style="list-style-type: none">1. Discontinue use and contact a local repair center.



PARTS LIST

Part	Description	Qty	Part	Description	Qty
1	Screw	1	20	Nut m16	2
2	Handle socket	1	21	Cover plug	2
3	Cylinder assembly	1	22	Rear wheel assembly	2
4	Spring	2	23	Bolt m12x25	2
5	Linkage	1	24	Back shaft	1
6	Cotter pin	1	25	Retaining ring Ø12	4
7	Retaining ring Ø25	4	26	Nut m12	2
8	Cover board	1	27	Handle	1
9	Linking pin	2	28	Washer	2
10	Lifting arm assembly	1	29	Screw m6x10	2
11	Wall plate assembly	1	30	Shaft gasket	2
12	Supporting shaft	1	31	Handle socket	2
13	Saddle	1	32	Washer Ø18	2
14	Screw	1	33	Screw m8x16	2
15	Retaining ring Ø16	2	34	Washer Ø8	2
16	Front wheel	2	35	Handle shaft	1
17	Retaining ring Ø18	2	36	Rubber vannulation	2
18	Washer	2	37	Nut m14	2
19	Retaining washer Ø16	2	38	Retaining ring Ø14	2

