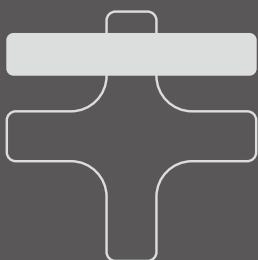




# KINGTONY



Please wear proper safety gear while working.





**KING TONY**

# **HYDRAULIC BODY REPAIR KIT OPERATION MANUAL**

**10  
TON**



**NO.9TY120-10A-B**

## **WARNING**

- Read these instructions carefully and take note of all safety notices and warnings.
- Use this product with due care and attention and only for the use for which it is intended.
- Failure to respect these instructions may result in material damage and/or serious personal injury.
- Keep these instructions in a safe place for future reference.
- Failure to respect the following instructions may result in a loss of product capacity, damage or a permanent defect which may in turn result in material damage and/or serious personal injury.
- Make sure that all instructions and safety warnings included in this kit have been read and fully understood prior to use.
- The owner of this kit is responsible for the equipment and must check that its installation and use are in accordance with all legal safety requirements.
- All safety labels must remain on the product and be replaced as soon as they become difficult to read.
- Always wear safety equipment (goggles, visor/face guard) when using this equipment.
- This kit is designed for use with bodywork and chassis. Using this kit for uses other than those for which it was designed may result in overload, a reduced load capacity, reduced stability, and damage to the equipment.
- Do not overload the hydraulic system. Exerting a pressure exceeding the pump and cylinder's rated capacity may result in serious personal injury. Bent and unstable extension bars are a sign of overload.
- Some parts within this kit do not have the same rated capacity as the pump and cylinder. Always use a pressure gauge when installing to monitor the hydraulic pressure. Refer to the instruction manual for typical applications and the corresponding rated capacity.
- All attachments and extension bars must be correctly aligned and slotted into place for the force of the cylinder to be balanced, or the load will be unstable.

## **SAFETY INSTRUCTIONS FOR BODYWORK & CHASSIS REPAIR**

- Make sure all instructions and safety warnings have been read and fully understood before use.
- Steel and other materials may snap or break when exposed to strong force; always wear adequate safety equipment (goggles, visor/face guard) when using this equipment.
- If you detect or even suspect that there may be a possible defect in the structure, discontinue use immediately, and do not use the pump.
- Always replace the dust cap when the connections are not attached in order to keep the oil lines clean.
- Do not bend or drop heavy objects onto the pipe. Always make sure that the work area is clean and tidy in order to avoid damaging the pipe and connectors. To avoid damage and a loss in performance, keep this equipment away from fire and heat.
- Failure to respect these instructions may result in damage to the jack and/or a malfunction which may cause material damage and/or personal injury.
- Check over the equipment before each use.

## **SAFETY INSTRUCTIONS FOR PUMP AND JACK OPERATION**

- Always respect the pump's rated maximum load capacity. Never modify the high pressure reducing valve. Creating pressure higher than the rated capacity can cause serious personal injury.
- Always fully lower the cylinder before opening the pump's refill hole to refill the hydraulic fluid. Overfilling can cause personal injury due to the excess pressure created in the reservoir when the cylinder is lowered.
- Always respect the cylinder's rated maximum load capacity.
- Creating pressure higher than the rated capacity can cause serious personal injury.
- Never place an unbalanced or an off-centre load onto the cylinder or the load could fall and cause personal injury.

## **SAFETY INSTRUCTIONS FOR USING THE PIPE**

- Before using the pump, tighten all of the connections with the correct tools and the connections should all be airtight.
- Do not overtighten, overtightening can cause premature wearing of the pipe and the parts which are resistant to high pressure can crack at a pressure lower than their rated capacity.
- In the case of a breakage, explosion or if the pipe must be disconnected, shut off the pump immediately and open the pressure valve to let out all the built-up pressure.
- Never touch a leaking pressure pipe with your hands, the force of the leaking liquid can cause injury.
- Keep the pipe away from dangerous conditions, such as fire, extreme cold, heat, sharp surfaces, or heavy shocks.
- Never bend or twist the pipe, the liquid will not be able to circulate properly.
- Never use the pipe to pull or move the equipment attached to it.
- Regularly check that the pipe is in good working order as each of these conditions can damage it and cause injury.
- The parts and joints used must be compatible with the type of hydraulic fluid used. The pipe must never come into contact with corrosive substances, items impregnated with creosote, or certain paints. Check with a King Tony technician before painting the pipe.
- Never paint the connections. The deterioration of the pipe caused by corrosive substances may cause personal injury.

## **OPERATING INSTRUCTIONS**

The pump may be used horizontally or vertically, with the head facing downwards as shown.

1. Assemble the pipe between the pump and the cylinder.
2. Correctly prepare the load depending on your application. Place the load on the jack.

### **IMPORTANT**

- The use of extension bars or off-centre loads greatly reduces the capacity of the hydraulic system. When using extension bars, place the shortest ones furthest away. Never place the shortest extension bars in the middle.
- Some parts within this kit do not have the same rated capacity as the pump and cylinder.

## ALWAYS USE A PRESSURE GAUGE WHEN INSTALLING TO MONITOR THE HYDRAULIC PRESSURE.

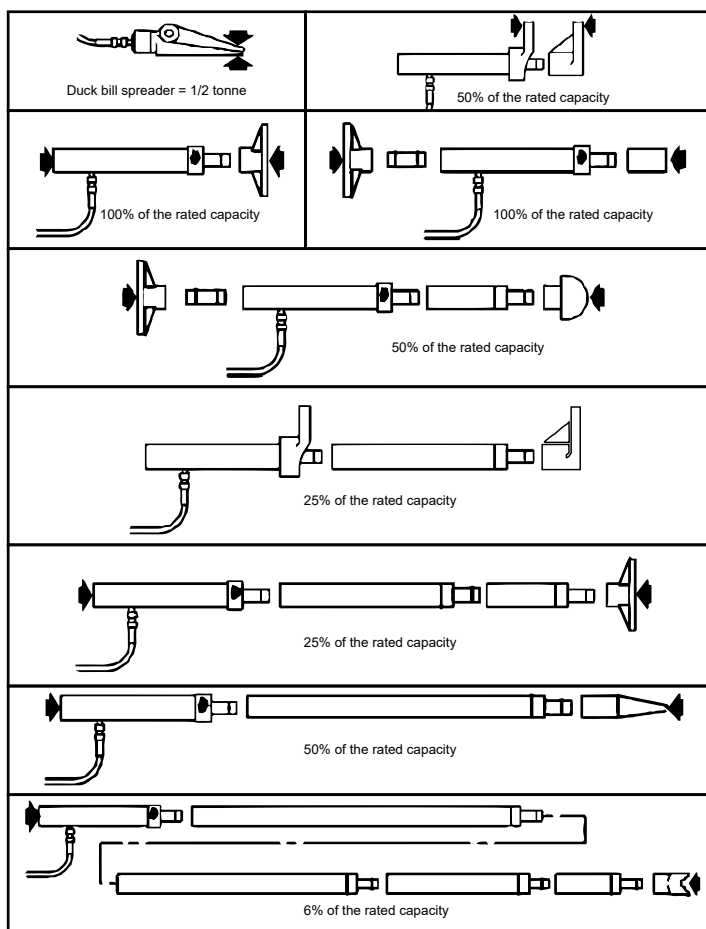
- Turn the pressure reducing valve clockwise to close it. only close by hand, applying too much force on the valve may damage the system.
- Pump the pump handle up and down to send oil down the pipe towards the jack, making it extend.
- Check the pressure gauge whilst using.
- NOTE: The pump is equipped with an overload valve which sends the oil back to the pump reservoir if the system reaches its rated maximum pressure and overloads. If this happens, pumping will have no effect of the system.
- In order to reduce the pressure, slowly turn the pressure valve in an anti-clockwise direction. (The pressure release speed is controlled by the speed at which the valve opens).

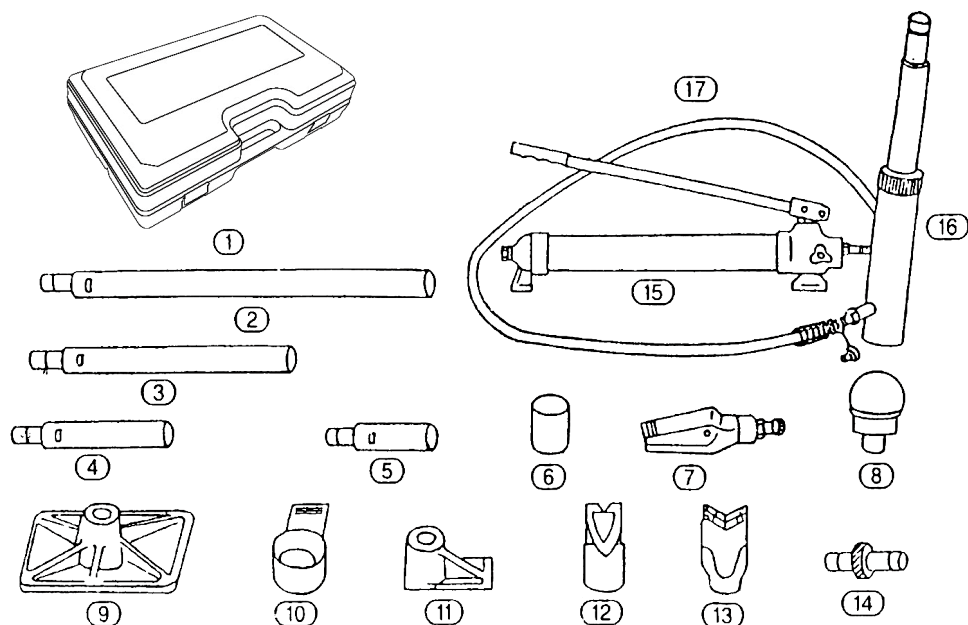
## PURGING THE AIR FROM THE SYSTEM

Air can build up in the hydraulic system after the first use or prolonged use. This makes the jack slow or unstable.

### Purging trapped air:

- Place the jack lower down than the pump with the end of the piston facing downwards.
- Extend and retract the cylinder multiple times, without putting any load on the system. The air is in the pump reservoir.
- Make sure that the cylinder is not extended, the pump is horizontal and that there is no pressure on the hydraulic system. Remove the refill cap. Fill the reservoir with a suitable hydraulic fluid; it should reach 12.7mm below the top of the reservoir.
- When you use extension bars with the cylinder, the rated capacity of the hydraulic system is reduced by 50%. The hydraulic system's rated capacity is reduced by 50% again for each additional extension used.
- When using two or more extensions, always place the shortest extension the furthest from the cylinder.

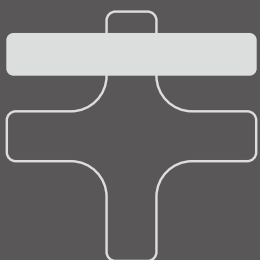




Part	Description	Qty	Part	Description	Qty
1	Blow case	1	10	Ram toe	1
2	685mm Extension bar	1	11	Plunger toe	1
3	456mm Extension bar	1	12	Cleft cap	1
4	250mm Extension bar	1	13	'V' base	1
5	127mm Extension bar	1	14	Male connector	1
6	Serrated cap	1	15	10 Ton pump unit	1
7	Spreading wedge	1	16	Ram unit	1
8	Big rubber head	1	17	Hydraulic hose	1
9	Base plate	1			



# KING TONY



Please wear proper safety gear while working.





**KING TONY**

# **HYDRAULIC BODY REPAIR KIT OPERATION MANUAL**

**4  
TON**



**NO.9TY120-040A-B**

## **WARNING**

- Read these instructions carefully and take note of all safety notices and warnings.
- Use this product with due care and attention and only for the use for which it is intended.
- Failure to respect these instructions may result in material damage and/or serious personal injury.
- Keep these instructions in a safe place for future reference.
- Failure to respect the following instructions may result in a loss of product capacity, damage or a permanent defect which may in turn result in material damage and/or serious personal injury.
- Make sure that all instructions and safety warnings included in this kit have been read and fully understood prior to use.
- The owner of this kit is responsible for the equipment and must check that its installation and use are in accordance with all legal safety requirements.
- All safety labels must remain on the product and be replaced as soon as they become difficult to read.
- Always wear safety equipment (goggles, visor/face guard) when using this equipment.
- This kit is designed for use with bodywork and chassis. Using this kit for uses other than those for which it was designed may result in overload, a reduced load capacity, reduced stability, and damage to the equipment.
- Do not overload the hydraulic system. Exerting a pressure exceeding the pump and cylinder's rated capacity may result in serious personal injury. Bent and unstable extension bars are a sign of overload.
- Some parts within this kit do not have the same rated capacity as the pump and cylinder. Always use a pressure gauge when installing to monitor the hydraulic pressure. Refer to the instruction manual for typical applications and the corresponding rated capacity.
- All attachments and extension bars must be correctly aligned and slotted into place for the force of the cylinder to be balanced, or the load will be unstable.

## **SAFETY INSTRUCTIONS FOR BODYWORK & CHASSIS REPAIR**

- Make sure all instructions and safety warnings have been read and fully understood before use.
- Steel and other materials may snap or break when exposed to strong force; always wear adequate safety equipment (goggles, visor/face guard) when using this equipment.
- If you detect or even suspect that there may be a possible defect in the structure, discontinue use immediately, and do not use the pump.
- Always replace the dust cap when the connections are not attached in order to keep the oil lines clean.
- Do not bend or drop heavy objects onto the pipe. Always make sure that the work area is clean and tidy in order to avoid damaging the pipe and connectors. To avoid damage and a loss in performance, keep this equipment away from fire and heat.
- Failure to respect these instructions may result in damage to the jack and/or a malfunction which may cause material damage and/or personal injury.
- Check over the equipment before each use.

## **SAFETY INSTRUCTIONS FOR PUMP AND JACK OPERATION**

- Always respect the pump's rated maximum load capacity. Never modify the high pressure reducing valve. Creating pressure higher than the rated capacity can cause serious personal injury.
- Always fully lower the cylinder before opening the pump's refill hole to refill the hydraulic fluid. Overfilling can cause personal injury due to the excess pressure created in the reservoir when the cylinder is lowered.
- Always respect the cylinder's rated maximum load capacity.
- Creating pressure higher than the rated capacity can cause serious personal injury.
- Never place an unbalanced or an off-centre load onto the cylinder or the load could fall and cause personal injury.

## **SAFETY INSTRUCTIONS FOR USING THE PIPE**

- Before using the pump, tighten all of the connections with the correct tools and the connections should all be airtight.
- Do not overtighten, overtightening can cause premature wearing of the pipe and the parts which are resistant to high pressure can crack at a pressure lower than their rated capacity.
- In the case of a breakage, explosion or if the pipe must be disconnected, shut off the pump immediately and open the pressure valve to let out all the built-up pressure.
- Never touch a leaking pressure pipe with your hands, the force of the leaking liquid can cause injury.
- Keep the pipe away from dangerous conditions, such as fire, extreme cold, heat, sharp surfaces, or heavy shocks.
- Never bend or twist the pipe, the liquid will not be able to circulate properly.
- Never use the pipe to pull or move the equipment attached to it.
- Regularly check that the pipe is in good working order as each of these conditions can damage it and cause injury.
- The parts and joints used must be compatible with the type of hydraulic fluid used. The pipe must never come into contact with corrosive substances, items impregnated with creosote, or certain paints. Check with a King Tony technician before painting the pipe.
- Never paint the connections. The deterioration of the pipe caused by corrosive substances may cause personal injury.

## **OPERATING INSTRUCTIONS**

The pump may be used horizontally or vertically, with the head facing downwards as shown.

1. Assemble the pipe between the pump and the cylinder.
2. Correctly prepare the load depending on your application. Place the load on the jack.

### **IMPORTANT**

- The use of extension bars or off-centre loads greatly reduces the capacity of the hydraulic system. When using extension bars, place the shortest ones furthest away. Never place the shortest extension bars in the middle.
- Some parts within this kit do not have the same rated capacity as the pump and cylinder.

## ALWAYS USE A PRESSURE GAUGE WHEN INSTALLING TO MONITOR THE HYDRAULIC PRESSURE.

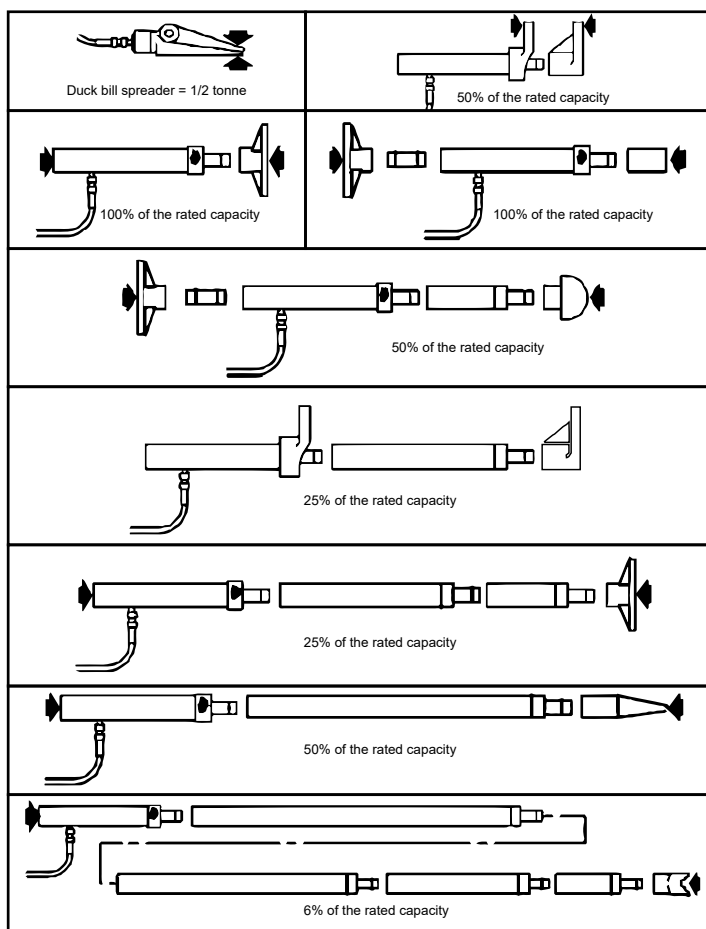
- Turn the pressure reducing valve clockwise to close it. only close by hand, applying too much force on the valve may damage the system.
- Pump the pump handle up and down to send oil down the pipe towards the jack, making it extend.
- Check the pressure gauge whilst using.
- NOTE: The pump is equipped with an overload valve which sends the oil back to the pump reservoir if the system reaches its rated maximum pressure and overloads. If this happens, pumping will have no effect of the system.
- In order to reduce the pressure, slowly turn the pressure valve in an anti-clockwise direction. (The pressure release speed is controlled by the speed at which the valve opens).

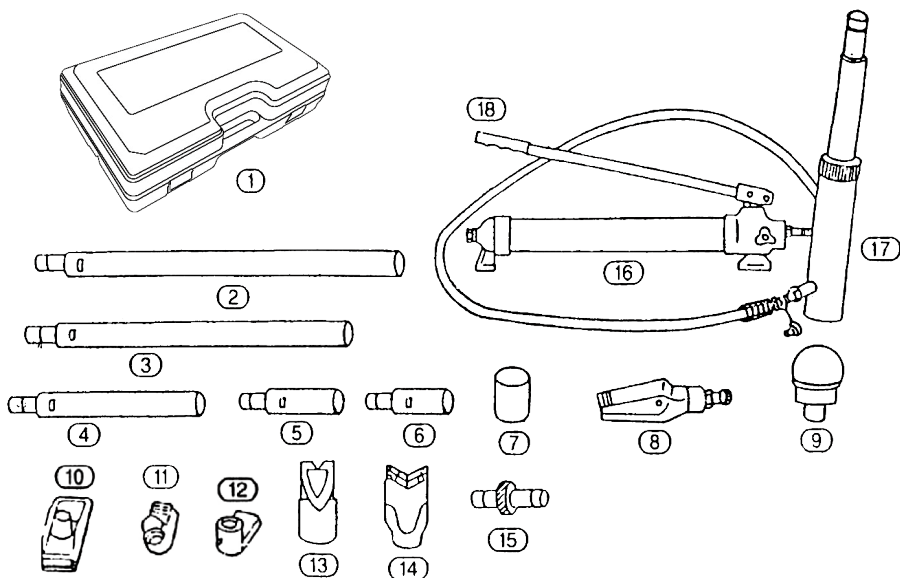
## PURGING THE AIR FROM THE SYSTEM

Air can build up in the hydraulic system after the first use or prolonged use. This makes the jack slow or unstable.

### Purging trapped air:

- Place the jack lower down than the pump with the end of the piston facing downwards.
- Extend and retract the cylinder multiple times, without putting any load on the system. The air is in the pump reservoir.
- Make sure that the cylinder is not extended, the pump is horizontal and that there is no pressure on the hydraulic system. Remove the refill cap. Fill the reservoir with a suitable hydraulic fluid; it should reach 12.7mm below the top of the reservoir.
- When you use extension bars with the cylinder, the rated capacity of the hydraulic system is reduced by 50%. The hydraulic system's rated capacity is reduced by 50% again for each additional extension used.
- When using two or more extensions, always place the shortest extension the furthest from the cylinder.





Part	Description	Qty	Part	Description	Qty
1	Blow case	1	10	Base plate	1
2	495mm Extension bar	1	11	Ram toe	2
3	418mm Extension bar	1	12	Plunger toe	2
4	215mm Extension bar	1	13	Cleft cap	2
5	125mm Extension bar	4	14	'V' base	2
6	82mm Extension bar	1	15	Male connector	2
7	Serrated cap	4	16	4 Ton pump unit	2
8	Spreading wedge	4	17	Ram unit	2
9	Rubber head	4	17	Hydraulic hose	2