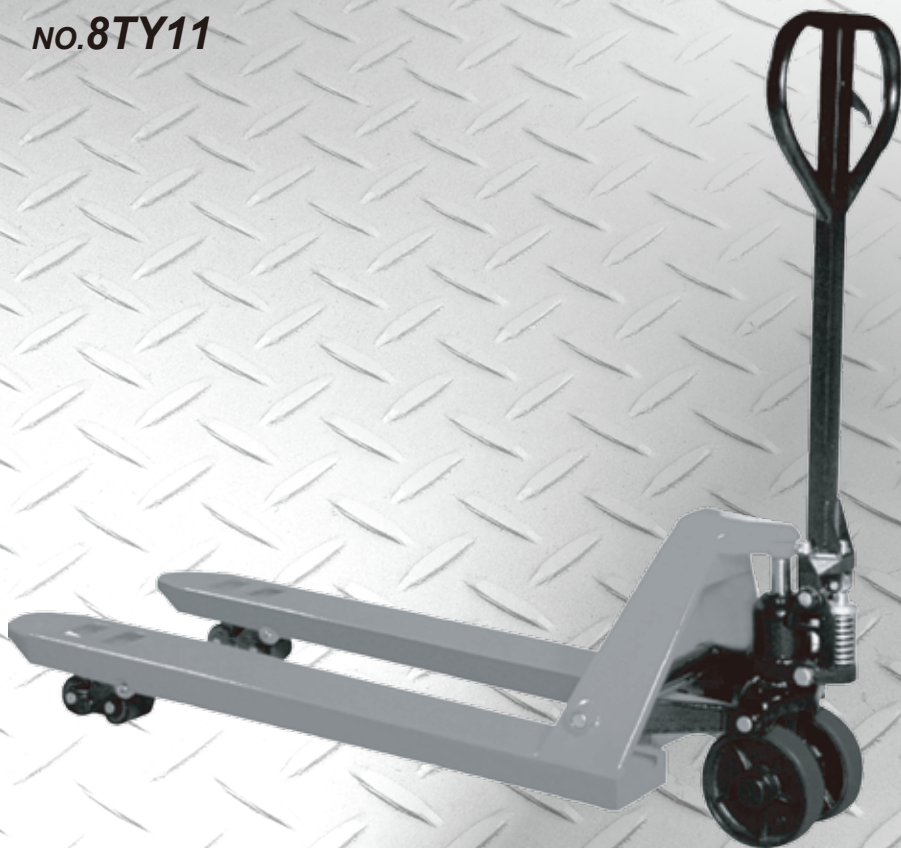




KING TONY

HAND PALLET TRUCK OPERATION MANUAL

NO.8TY11



WARNING



Please wear proper safety gear while working.

Enjoy your work

1. SPECIFICATIONS

KT NO.	Capacity (T)	Min height (mm)	Max height (mm)	Max lifting height (mm)	Fork length (mm)
8TY11-02A-B	2	85	195	>=110	1220
8TY11-25A-B	2.5				
8TY11-03A-B	3				

2. TO ATTACH DRAW-BAR TO PUMP UNIT

If you have purchased a wooden box of pallet truck, some assembly is required, one axle with hole A105, two elastic pins A106 (Note one is in the axle A105), these parts are putted in a plastic bag, and putted into the draw-bar.

NOTE 1. : The number of draw-bar and pump should be the same.

NOTE 2. : When attaching the handle, you had better squat just behind the pallet truck.

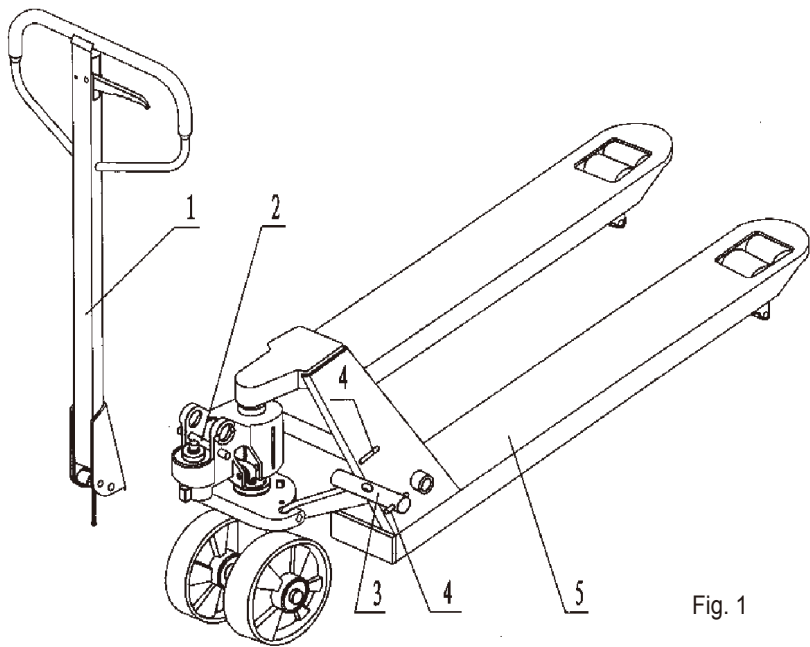


Fig. 1

Part	Description
1	Draw-bar
2	Pin
3	Axle with hole
4	Elastic pin
5	Fork frame

2.1 Insert the draw-bar onto the pump piston A346, then use a hammer to insert the axle with hole A105 into the hydraulic pump and draw-bar from the right to left. (See fig. 2).

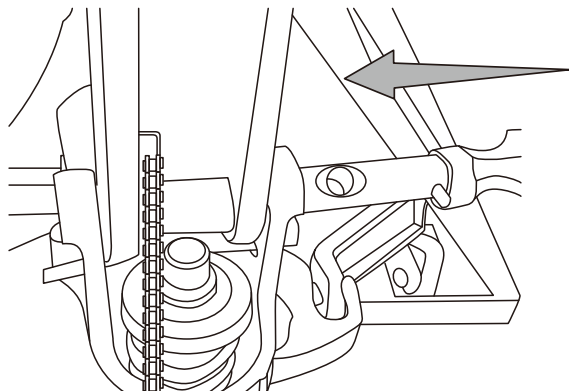


Fig. 2

2.2 Let control handle A117 to the 'LOWER' position, then pass the adjusting nut A104, adjusting bolt A103 and chain A102 through the hole of axle A105 with your hand (See fig. 3).

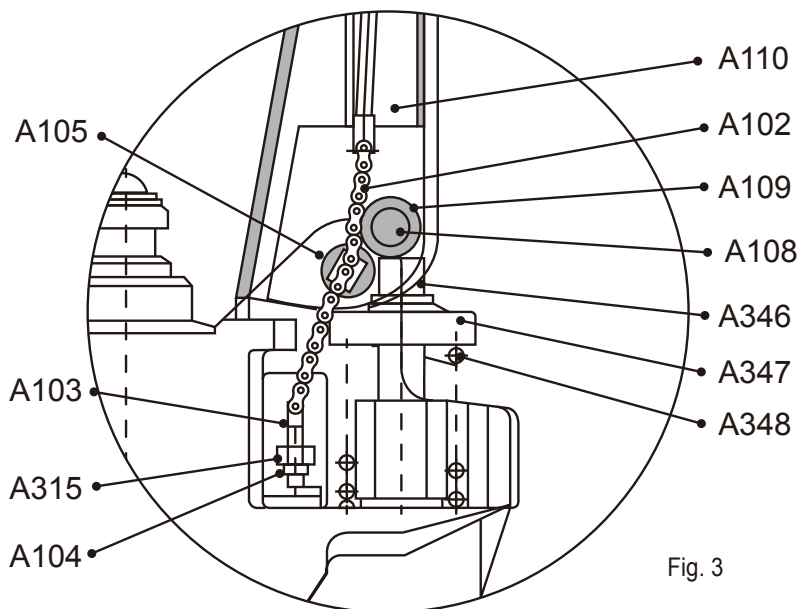


Fig. 3

2.3 Press the draw-bar (A110, A110B) down, take away the pin(#2) (See Fig. 1).

2.4 Let the control handle (A117) on 'RAISE' position, then raise the lever plate (A315) with the pin (#2) and insert the adjusting bolt(A103) into the front slot of lever plate (A315), note to keep the adjusting nut (A104) on the under side of the lever plate.

2.5 Use a hammer to tap another elastic pin (A106) into the axle with hole (A105). The draw-bar is now assembled to the pump.

3. TO ADJUST RELEASE DEVICE

On the draw-bar of this pallet truck, you can find the control handle(A117) which can be regulated in three positions :

Raise-handle down

Drive position-handle in center position

Lower-handle up, the lever moves back the drive position when released.

If however they have been changed, you can adjust according to following step:

- 3.1 If the forks elevate while pumping in the DRIVE position, turn the adjusting nut (A104) on the adjusting bolt(A103) or screw(A318) clockwise until pumping action does not raise the forks and the DRIVE position functions properly.
- 3.2 If the forks descend while pumping in the DRIVE position, turn the nut(A104) or screw(A318) counter-clockwise until the forks do not lower.
- 3.3 If the forks do not descent when the control handle (A117) is in the LOWER position, turn the nut(A104) or screw (A318) clockwise until raising the control handle(A117) lowers the forks. Then check the DRIVE position according to item 3.1 and 3.2 to be sure the nut (A104) and screw(A318) is in the proper position.
- 3.4 If the forks do not elevate while pumping in the RAISE position, turn the nut (A104) or screw (A318) counter-clockwise until the forks elevate while pumping in the RAISE position. Then check the LOWER and DRIVE position according to item 3.1, 3.2 and item 3.3.

4. MAINTENANCE

4.1 OIL

Please check the oil level every six months. The oil can be hydraulic oil: ISO VG32, its viscosity should be 30cSt at 40° C, total volume is about 0.4lt.

4.2 TO BANISH THE AIR

The air may come into the hydraulic oil because of transportation or pump in upset position. It can cause that the forks do not elevate while pumping in the RAISE position. The air can be removed in the following way: let the control handle (A117) on the LOWER position, then move the draw-bar up and down for several times.

4.3 DAILY CHECK AND MAINTENANCE

Daily check of the pallet truck can limit wear as much as possible. Special attention should be paid to the wheels, the axles, as thread, rags, etc. It may block the wheels. The forks should be unloaded and lowered in the lowest position when the job is over.

4.4 LUBRICATION

All bearings and shafts are provided with long-life grease at the factory. You only need provide with long-life grease at monthly intervals or after each time the truck is cleaned thoroughly to the lubrication points.

5 GUIDE TO SAFETY OPERATION

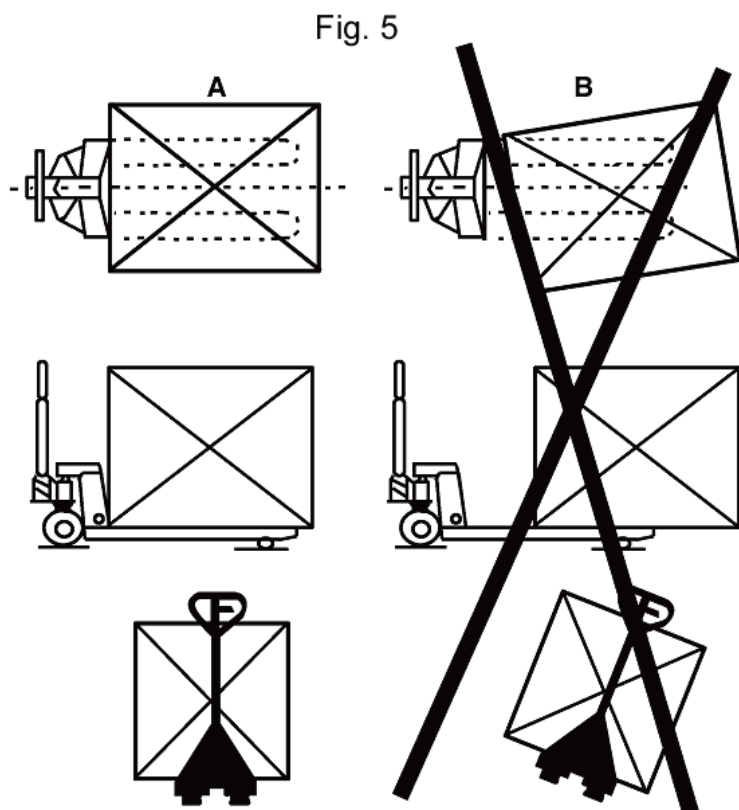
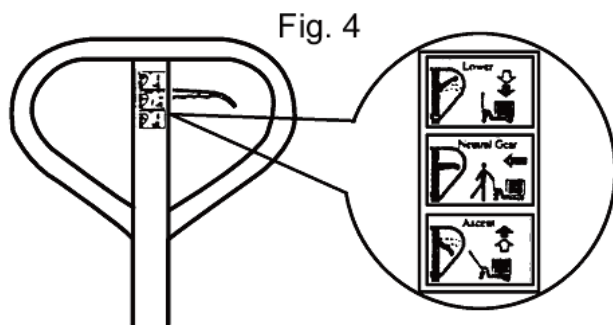
- 5.1 Operator should read all warning signs and instructions here and on the pallet truck before using this truck.
- 5.2 Do not use on a slopping ground.
- 5.3 Do not operate a pallet truck unless you are familiar with it and have been trained or authorized to do so.
- 5.4 Do not operate a pallet truck unless you have checked its condition. Give special attention to the wheels or rollers, the draw-bar unit, the fork unit, the lever plate, etc. .
- 5.5 To pull the truck, always move the control handle into the drive position. This makes the draw-bar easier to move and depressurizes the pump section of the hydraulics. This preserves the hydraulic seals and the valve components. A long service life can be expected.
- 5.6 Do not take up any people on the pallet truck.
- 5.7 The operator had better take on gloves for labor protecting.
- 5.8 When the goods have been transported, all people should be away from the forks for 600mm.
- 5.9 Do not load goods like fig. 5/B .
- 5.10 Do not load over maximum capacity.
- 5.11 At others special condition or place, the operator should be carefully to operate the pallet truck.

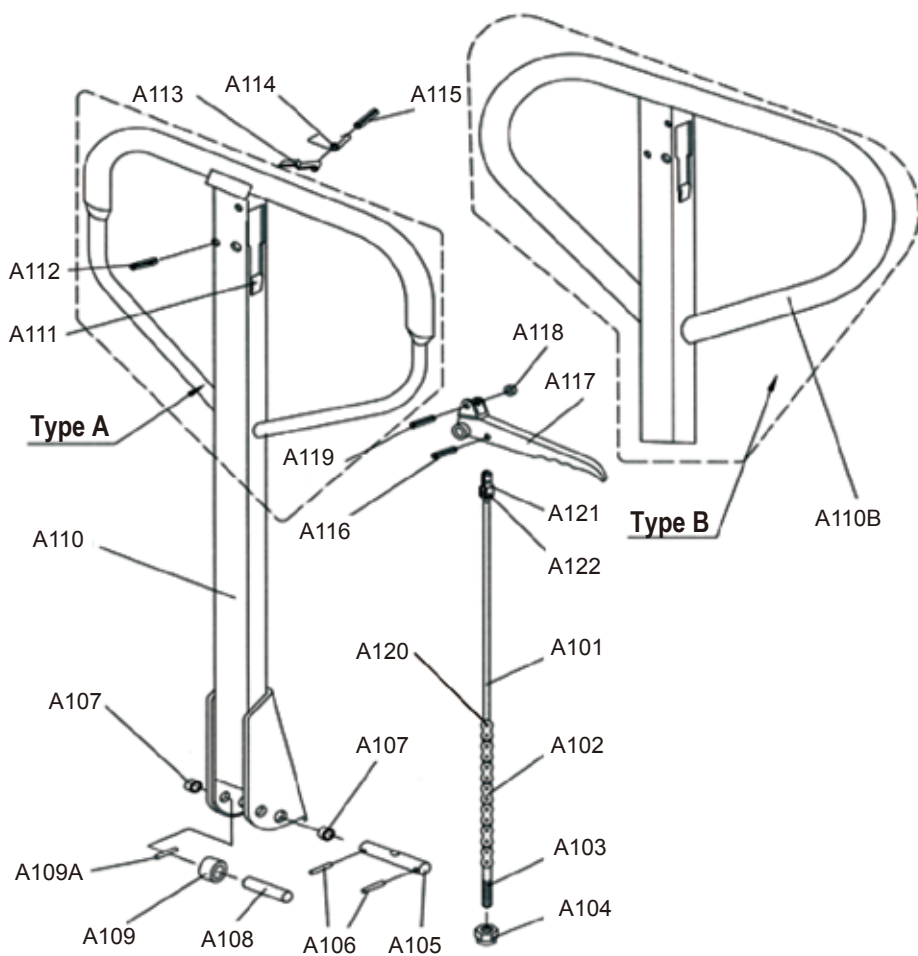
6. TROUBLE SHOOTING

No	Problems	Causes	Solutions
1	The forks can not be up the max. height.	-The hydraulic oil is not enough.	- Pour in the oil.
2	The forks can not be lifted up.	- Without hydraulic oil. - The oil has impurities. - The nut (A104) is too high, keep the pumping valve open.-Air came into the hydraulic oil.	- Fill in the oil.-Change the oil. - Adjust the nut(A104) or screw (A318) (see item 3.4) - Banish the air.(see item 4.2)
3	The forks can not be descended.	- The piston rod(A344) or pump (A328) is deformed resulting from partial loading slanting to one side or over-loading. - The fork was kept in the high position for long time with piston rod bared to arise in rusting and jamming of the rod. - The adjusting nut (A104) or screw (A318) is not in correct position.	- Replace the piston rod (A344) or pump (A328). - Keeping the fork in the lowest position if not using, and pay more attention to lubricate the rod. - Adjust the nut (A104) or screw (A318) (see item 3.3)
4	Leaks	- Sealingparts worn or damaged. - Some part cracked or worn into small.	- Replace with the new one. - Replace with the new one.
5	The fork descends without the release valve worked.	- The impurities in the oil cause the release valve to be unable to close tight. - Some parts of hydraulic system is cracked or bored. - Air came into the oil. - Sealing parts worn or damaged. - The adjusting nut (A104) or screw (A318) is not in the correct position.	- Replace with new oil. - Inspect and replace the waste parts. - Banish the air. (See item 4.2) - Replace with the new one. - Adjusting the nut (A104) or screw (A318). (See item 3.2)

NOTE: DO NOT ATTEMPT TO REPAIR THE PALLET TRUCK UNLESS YOU ARE TRAINED AND

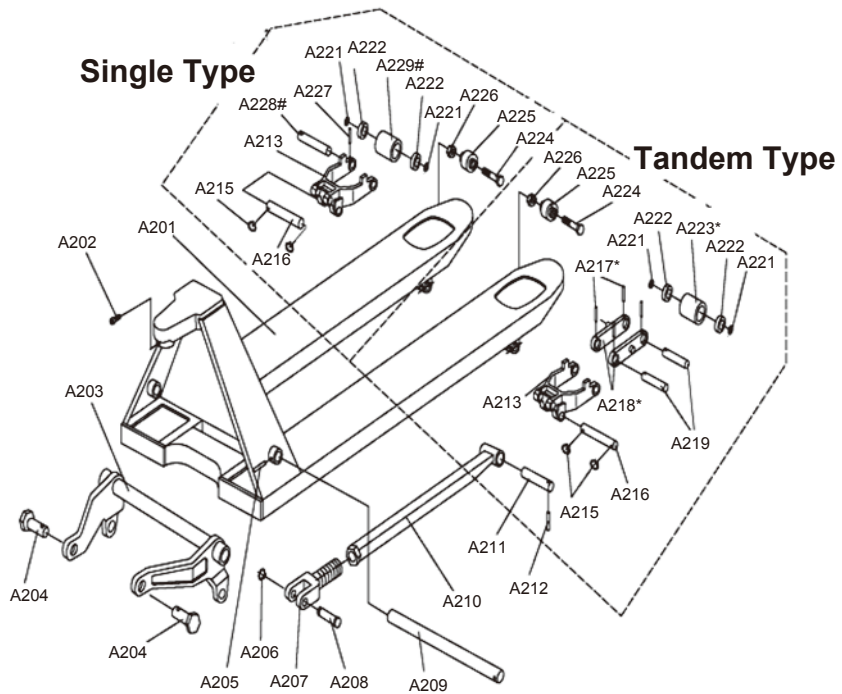
AUTHORIZED TO DO SO.





LIST OF DRAW-BAR

No.	Description	Qty.	Remark	No.	Description	Qty.	Remark
A101	Release rod	1		A111	Stop rubber	1	
A102	Chain	1		A112	Elastic pin	1	
A103	Adjusting bolt	1		A113	Blade spring	1	
A104	Adjusting nut	1		A114	Spring	1	
A105	Axle with hole	1		A115	Elastic pin	1	
A106	Elastic pin	2		A116	Elastic pin	1	
A107	Bushing	2		A117	Control handle	1	
A108	Roller pin	1		A118	Roller	1	
A109	Pressure roller	1		A119	Elastic pin	1	
A109A	Elastic pin	1		A120	Pin	1	
A110	Draw-bar	1	For Type A	A121	Pull board	1	
A110B	Draw-bar	1	For Type B	A122	Pin	1	



LIST OF FORK FRAME

No.	Description	Qty.	No.	Description	Qty.
A201	Fork frame	1	A216	Shaft	2
A202	Bolt	1	A217*	Elastic pin	4
A203	Rock-arm	1	A218*	Linking plate	4
A204	Shaft	2	A219	Shaft for roller	1or4
A205	Pin	1	A221	Washer	8or4
A206	Retaining ring	2	A222	Bearing	8or4
A207	Adjust seat	2	A223*	Loading roller	4
A208	Pin	2	A224	Bolt	2
A209	Shaft	1	A225	Enter roller	2
A210	Pushing rod	2	A226	Nut	8or2
A211	Shaft	2	A227	Elastic pin	2
A212	Elastic pin	2	A228#	Shaft for roller	2
A213	Frame of roller	2	A229#	Loading roller	2
A215	Retaining ring	2			

NOTE: *--For double wheel; #--For single wheel

