

GREASE BUCKET PUMP OIL TRANSFER BUCKET PUMP

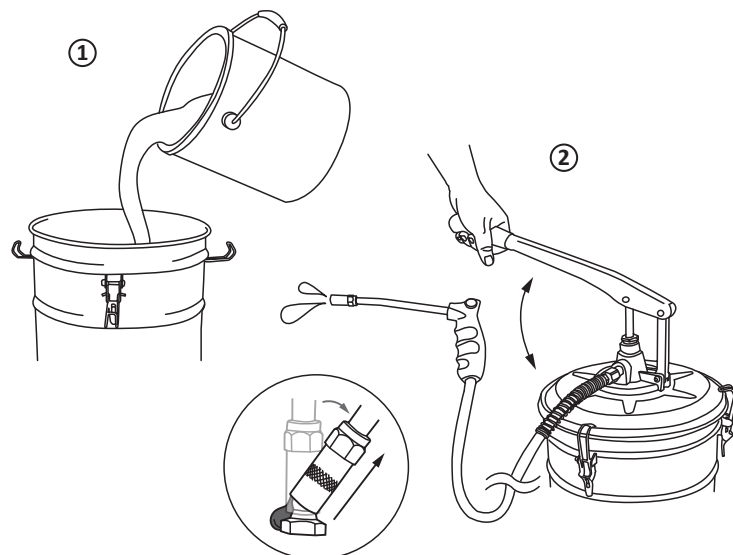
9TU21-20
NO. 9TU21-30
9TW21-20



Please wear proper safety gear while working.



PREPARATIONS BEFORE OPERATION



Model	9TU21-20	9TU21-30	9TW21-20
Capacity	20L	30L	20L
Deliver rate	4 g per stroke	4g per stroke	65 cc per stroke
Weight	N.W. 9kgs	N.W. 10.5kgs	N.W. 7.8kgs
Hose length	6ft	6ft	8ft
Accessories	Grease gun 1/8" x 28PT Screw thread High pressure hose 1/4"x1.8meter 10,000 psi W.P Carry & wheel assembly		6 ft 1/2" PVC Hose Carry & wheel assembly



NO.9TU21-20

No.	Descriptions	Q'ty
1	Pump Ass'y	1
2	Handle	1
3	Cover	1
4	Bucket	1
5	Bucket Hook	3
6	Hose	1
7	Grease Gun	1
8	Trolley	1
9	Wheel	2

No.1 + No.2

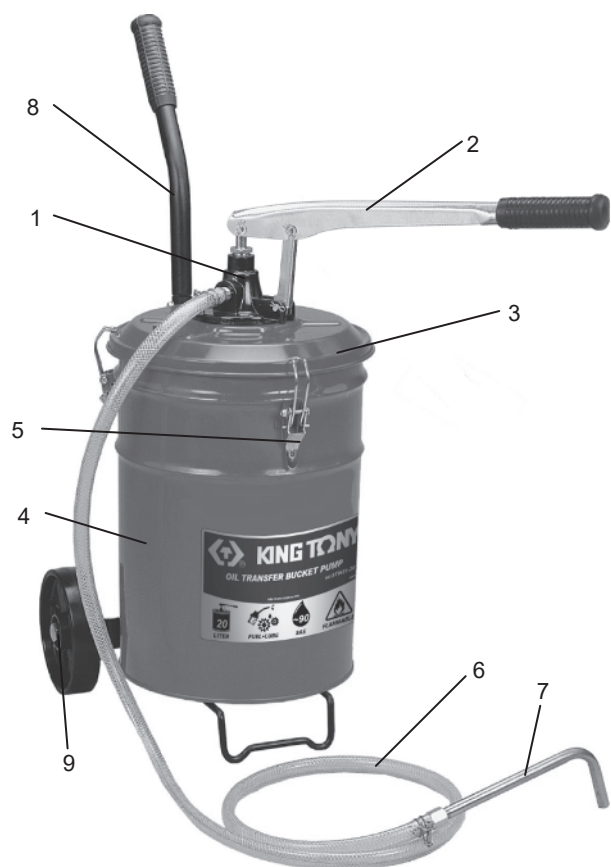
No.8 + No.9

NO.9TU21-30

No.	Descriptions	Q'ty
1	Pump Ass'y	1
2	Handle	1
3	Cover	1
4	Bucket	1
5	Bucket Hook	3
6	Hose	1
7	Grease Gun	1
8	Trolley	1
9	Wheel	2

No.1 + No.2

No.8 + No.9



NO.9TW21-20

No.	Descriptions	Q'ty
1	Pump Ass'y	1
2	Handle	1
3	Cover	1
4	Bucket	1
5	Bucket Hook	3
6	Hose	1
7	Oil Gun	1
8	Trolley	1
9	Wheel	2

No.1 + No.2

No.8 + No.9

INSTALLATION

- ① Use 1/4" washers & nuts to install handle parts.
- ② Use 3/8" washers & nuts to install base parts.
- ③ Use 1/2" washers & nuts to Install wheel parts.
- ④ Use 5/16" washers & nuts to install bucket parts.

