

KING TONY

**SERVICE JACK
3T**

NO.9TY132B-03



SAFETY INSTRUCTIONS

- Ensure that the jack is in sound condition and good working order. Take action for immediate repair or replacement of damaged parts. Use recommended parts only. Unapproved parts may be dangerous and will invalidate the warranty.
- Locate the jack in an adequate, well lit work area.
- Keep work area clean and tidy and free from unrelated materials.
- Use jack on level and solid ground, preferably concrete. Avoid tarmac as jack may sink in.
- Place wedges under the wheels of the vehicle but ensure that the wheels of the jack can move freely.
- Ensure that the vehicle handbrake is engaged and switch off the engine.
- Ensure a minimum distance of 0.5m between vehicle tit and static objects such as doors, walls, etc.
- Ensure all non-essential persons keep a safe distance whilst the jack is in use.
- Ensure that there are no passengers in the vehicle to be jacked up.
- Place jack under vehicle manufacturer's recommended lifting points (see vehicle handbook).
- Check that the lifting point is stable and centred on the jack saddle.
- Ensure that the jack wheels are free to move and that there are no obstructions.
- **IMPORTANT!** During the jacking operation ensure that you can always see the vehicle-to-jack saddle contact point.
- **DANGER!** Use the Jack for lifting only, NOT for supporting the lifted load.
- Use correctly rated jack stands under the vehicle before proceeding with any task.
- Ensure that there are no persons or obstructions beneath the vehicle before lowering.
- Use a qualified person to lubricate and maintain the jack.
- Confirm that the recommended hydraulic jack oil is used during maintenance.



- x DO NOT operate the jack if it is damaged.
- x DO NOT allow untrained persons to operate the jack.
- x DO NOT exceed the rated capacity of the jack.
- x DO NOT allow the vehicle to move during lifting and/or lowering.
- x DO NOT use the jack to move vehicle.
- x DO NOT jack vehicle if it may result in spillage of fuel, battery acid, or other dangerous substance.
- x DO NOT work under the vehicle until jack stands have been correctly positioned.
- x DO NOT use the jack for purposes other than which it is intended.
- x DO NOT top up system with brake fluid. Use hydraulic jack oil only.
- x DO NOT adjust the safety overload valve.
- When not in use store jack in a safe, dry, child proof area in the 'down' position.

TO RAISE JACK

1. Turn the operating handle clockwise until release valve closes. Do not over tighten the valve.
2. Place jack directly under object to be lifted so that saddle takes tip weight firmly and centrally. Check positioning under slight load to make sure jack will not slip when in use.
3. Raise jack to required height. After lifting use jack stand to hold load for any length of time.

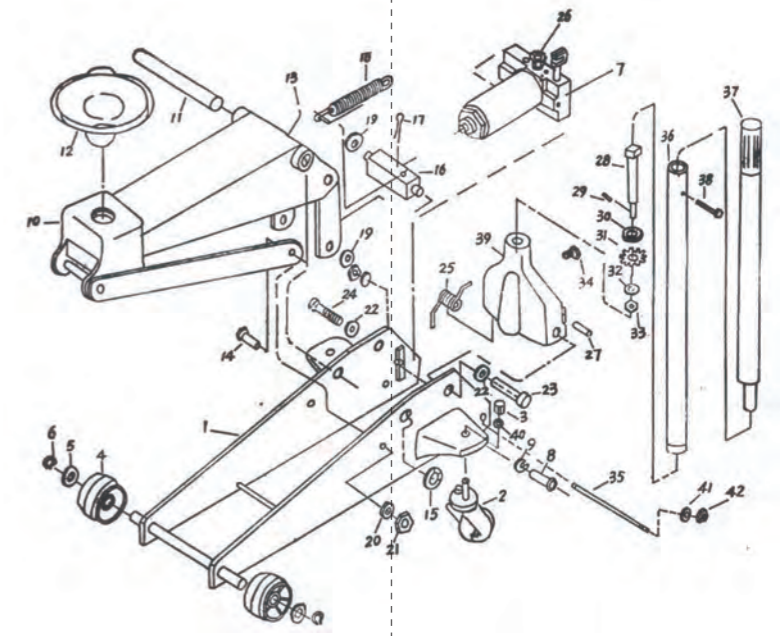
TO LOWER JACK

Slowly turn the operating handle counter clockwise. The speed of lowering is controlled by the amount valve is opened.

LUBRICATION POINTS

Before operating the jack lubricate the points indicated in the diagram. Use lubricants as indicated by the following numbers as marked on the diagram.

1. Handle. Use light oil on moving parts and lightly grease handle at point it fits into the handle socket.
2. WIJEE(S). Use light oil on axles and caster bearings.
3. LIFTING ARM. Inject grease into grease fitting
4. SADDLE AND LINKAGE. Use light oil on all moving and pivoting parts



Item	Description	Qty	Item	Description	Qty
1	Side. Plate Weldment	1	22	Lock Washer	2
2	Caster Assembly	2	23	Bolt	1
3	Locknut	2	24	Bolt	1
4	Wheel	2	25	Torsion Spring	1
5	Washer	2	26	Valve Gear	1
6	Retaining Ring	2	27	Plunger Pin	1
7	Power Unit Assembly	1	28	Gear Shaft	1
8	Socket Head Cpa Screw	2	29	Cotter Pin	1
9	Split Lock Washer	2	30	Washer	1
10	Lift Arm Assembly	1	31	Gear. Head Screw	1
11	Shaft, Arm	1	32	Lock Washer	1
12	Saddle	1	33	Hex Nut	1
13	Grease Fitting	1	34	Handle Bolt	1
14	Bolt	2	35	Stud	1
15	Retaining Ring	1	36	Handle, Lower	1
16	Block, Link	1	37	Handle, Upper	1
17	Cotter	1	38	Hex Head Screw	1
18	ReturnSpring	1	39	Handle Socket	1
19	Retaining Ring	2	40	Lock Washer	1
20	Lock Washer	2	41	Lock Washer	1
21	Nut	2			

Enjoy your work