



# KING TONY

## HYDRAULIC GARAGE JACK OPERATION MANUAL

NO.9TY133

**2.5**  
**TON**



**WARNING**



Please wear proper safety gear while working.



*Enjoy your work*

KT NO.	Capacity (T)	Min height (mm)	Max height (mm)
9TY133-25A-B	2.5	75	515

## **READ ALL INSTRUCTIONS BEFORE USE**

- Study, understand, and follow all instructions before operating this device.
- Failure to heed these markings may result in serious personal injury and / or property damage.
- Prior to each use, visual inspection shall be made to the device by checking for abnormal conditions, such as cracked welds, leaks, and damaged, loose, or missing parts.
- Do not exceed the rated capacity stated.
- Use only on hard level surfaces.
- This item is to be used as a lifting device only. Immediately support the vehicle with appropriate rated jack stands after lifting.
- Do not move the vehicle while it is on the jack.
- Lift only on areas of the vehicle as specified by the vehicle manufacturer.
- No alterations shall be made to this product.



## **LIFTING**

- Turn the handle/release valve clockwise to the closed position. Do not over tighten.
- Position the jack under the specified lift point.
- Begin lifting by pumping the handle up and down.
- Immediately support the vehicle with appropriately rated jack stands after lifting.
- Turn the handle/release valve slowly counterclockwise to lower the vehicle onto jack stands.

## **LOWERING**

- Turn the handle/release valve clockwise to the closed position. Do not over tighten.
- Pump the handle up and down to lift vehicle off jack stands.
- Remove the jack stands. Do not get under or let anyone get under the vehicle while lowering.
- Turn the handle/release valve slowly counterclockwise to lower the vehicle onto the ground.

## **MAINTENANCE**

### **CHECK AND REFILL OIL :**

- With the jack in the fully lowered level position, if unit cover is provided, remove unit cover, then remove oil filler plug.
- Proper oil level should be just cover inner cylinder as seen from the oil filler plug hole.
- Do not overfill. Always fill with new, clean hydraulic jack oil as recommended above.
- Reinstall oil filler plug, then reinstall unit cover.

**NOTICE :** Use high grade hydraulic oil only. Never use brake fluid, motor oil, transmission fluid, turbine oil or any other fluids.

## **LUBRICATION AND CLEANING**

- Periodically clean and lubricate all moving parts and pivot points.

## **AIR VENTING PROCEDURES**

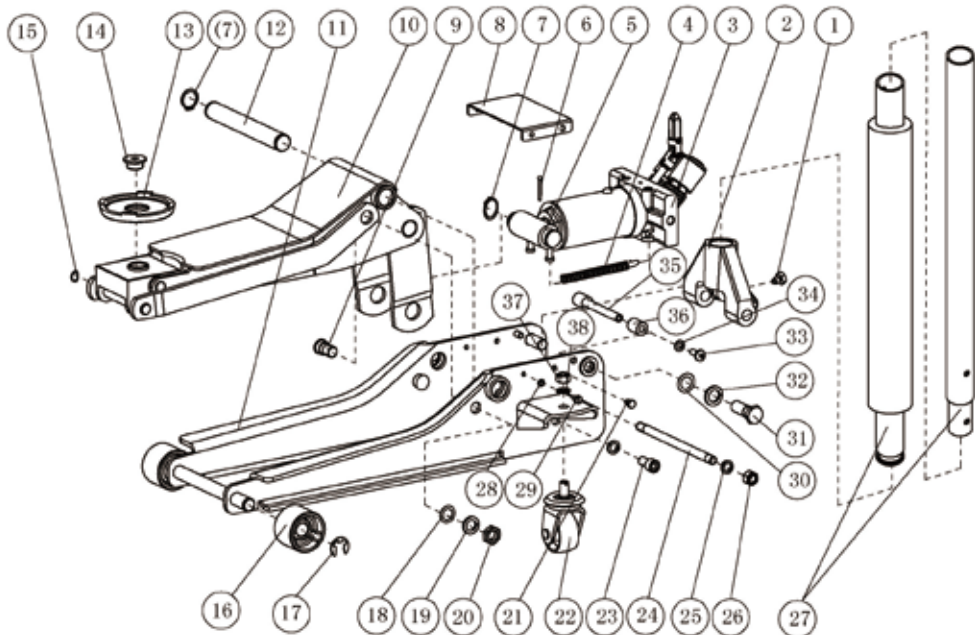
- With the jack in the fully lowered position, unlock release valve, remove oil filler plug.
- Pump the handle rapidly several mins. Reinstall oil filler plug.
- Turn the handle/release valve clockwise to the closed position.
- Pump the handle until the arm reaches maximum height and continue to pump several mins. to remove trapped air in the system.
- Turn the handle/release valve counterclockwise in one full turn and lower arm to the lowest position. Use force on saddle if necessary.
- Carefully and slowly loosen oil filler plug to release pressurized air.
- Repeat above steps until trapped air is completely vented.

## **INSPECTION**

- Visual inspection shall be made before each use of the device by checking for abnormal conditions, such as cracked welds, leaks, and damaged, loose, or missing parts.
- This device shall be inspected immediately if the device is believed to have been subjected to an abnormal load or shock.

## **TROUBLESHOOTING**

<b>Problems</b>	<b>Causes</b>	<b>Solutions</b>
Jack will not lift the load.	<ol style="list-style-type: none"><li>1. Release valve not tightly closed.</li><li>2. Low oil level.</li><li>3. Defective or worn internal parts.</li><li>4. Load exceeds maximum allowance.</li></ol>	<ol style="list-style-type: none"><li>1. Tighten release valve.</li><li>2. Check and add oil.</li><li>3. Discontinue use and contact a local repair center.</li><li>4. Use a higher capacity jack.</li></ol>
Jack will not hold the load.	<ol style="list-style-type: none"><li>1. Release valve not tightly closed.</li><li>2. Power unit malfunction.</li></ol>	<ol style="list-style-type: none"><li>1. Tighten release valve.</li><li>2. Discontinue use and contact a local repair center.</li></ol>
Jack will not descend to minimum height, or will not remain in lowered position.	<ol style="list-style-type: none"><li>1. Air trapped in system.</li><li>2. Reservoir oil overfilled.</li></ol>	<ol style="list-style-type: none"><li>1. Check and ensure proper oil level.</li><li>2. Vent air out of system. Follow "AIR VENTING PROCEDURES" instructions.</li></ol>
Jack will not lift to max height.	<ol style="list-style-type: none"><li>1. Low oil level.</li></ol>	<ol style="list-style-type: none"><li>1. Check and ensure proper oil level.</li><li>2. Follow "MAINTENANCE" instructions.</li></ol>
Jack will not function properly after trying solution.	<ol style="list-style-type: none"><li>1. Internal malfunction or structural damage.</li></ol>	<ol style="list-style-type: none"><li>1. Discontinue use and contact a local repair center.</li></ol>



## PARTS LIST

Part	Description	Qty	Part	Description	Qty
1	Screw	1	20	Nut m16	2
2	Handle socket	1	21	Cover plug	2
3	Cylinder assembly	1	22	Rear wheel assembly	2
4	Spring	2	23	Bolt m12x25	2
5	Linkage	1	24	Back shaft	1
6	Cotter pin	1	25	Retaining ring Ø12	4
7	Retaining ring Ø25	4	26	Nut m12	2
8	Cover board	1	27	Handle	1
9	Linking pin	2	28	Washer	2
10	Lifting arm assembly	1	29	Screw m6x10	2
11	Wall plate assembly	1	30	Shaft gasket	2
12	Supporting shaft	1	31	Handle socket	2
13	Saddle	1	32	Washer Ø18	2
14	Screw	1	33	Screw m8x16	2
15	Retaining ring Ø16	2	34	Washer Ø8	2
16	Front wheel	2	35	Handle shaft	1
17	Retaining ring Ø18	2	36	Rubber vannulation	2
18	Washer	2	37	Nut m14	2
19	Retaining washer Ø16	2	38	Retaining ring Ø14	2

www.kingtony.com  
customer service e-mail : service@kingtony.com