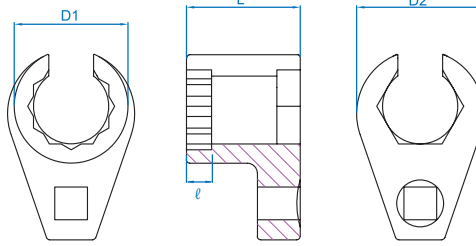


# Lambda Oxygen Sensor Socket

## 9AJ3122

3/8"

- For installing and removing the oxygen sensor
- Offset design for confined areas

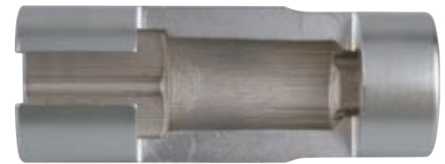
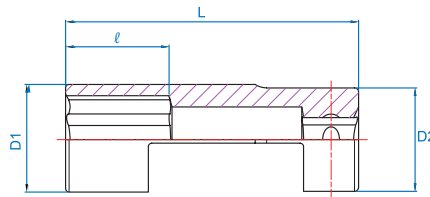


KT NO.	mm	D1 mm	D2 mm	l mm	L mm	kg	Box	1 / 100
9AJ3122	22	34	38	8	34	178.0	1	100

## 9AJ4322

1/2"

- For use on lambda probes
- Featuring a slot for the connecting lead



KT NO.	mm	D1 mm	D2 mm	l mm	L mm	kg	Box	5 / 60
9AJ4322	22	32	30	30	85	294	5	60

# Lambda Oxygen Sensor Socket Set

## 9AJ017 new

3/8"+1/2"

- 7 PC. special sockets for removal lambda / oxygen sensors
- Suitable for most vehicles : Volkswagen, BMW, PSA, Mercedes-Benz, Ford, etc...

1.80 kg 1 / 10



7 PC.

KT NO.	Part.	Size	mm
9AJ017		1/2"	29
		3/8"	22
		1/2"	27
		3/8"	22
		3/8"	27
		1/2"	22
		3/8"	22

